

# Wausau Tile, Inc.

## Precast Concrete Products

### Details, Specifications, Maintenance & Warranty

Included are details of our standard line of precast products and some of the methods for setting them. These are only a few of the available items and setting options. Variations in the design of our products are welcome, and we will be happy to help you design the precast for your project and setting method needed.

#### Our specialty is custom

Wausau Tile will assist you in all phases of your projects, from conception to completion. We have a staff of designers ready to produce shop drawings and guide you through getting the needed field dimensions to turn those dimensions into piece sizes and configurations.

Give us a call.

For questions or assistance contact:

Wausau Tile  
PO Box 1520  
Wausau, WI 54402-1520  
1-800-388-8728 Phone  
1-715-355-4627 Fax  
[www.wausautile.com](http://www.wausautile.com)

# Precast Concrete Products Details & Specifications

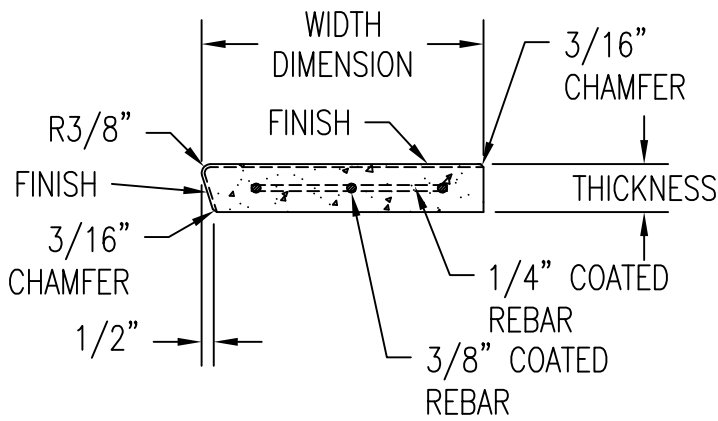
## Page   Item

PC-1	C-30 Tread on Setting Bed
PC-2A	C-31 Tread & Riser on Rubber Tabs
PC-2B	C-31 Tread & Riser on Setting Bed
PC-3	C-40 Separate Tread & Riser
PC-4A	C-51 Block Tread on Rubber Tabs
PC-4B	C-51 Block Tread on Setting Bed
PC-5	C-36 Tread & Riser (2 pages)
PC-6	C-41 Tread & Riser (2 pages)
PC-7	C-60 Self-Supporting Tread
PC-8	C-70 Self-Supporting Tread & Riser (2 pages)
PC-9A	Self-Supporting Tear Drop Treads Details
PC-9B	Self-Supporting Stairs – Center Mount Plan View
PC-10	Panels & Flat Coping
PC-11	Panels & L-Shaped Coping
PC-12	Wall Cap
PC-13	Deck Edging Details
PC-14A	Chamfer Coved Deck Edging
PC-14B	Radius Coved Deck Edging
PC-15	Column Cover Details
PC-16	Column Base Details
PC-17	Pool Coping
PC-18	Masonry Base & Trim Details
PC-19	Curbing

Specifications – Section 3400 Precast Concrete Amenities

Guidelines for Precast Concrete Tread Installation

Site Furnishings & Precast Concrete Maintenance & Warranty Manual



**PARAMETERS:**

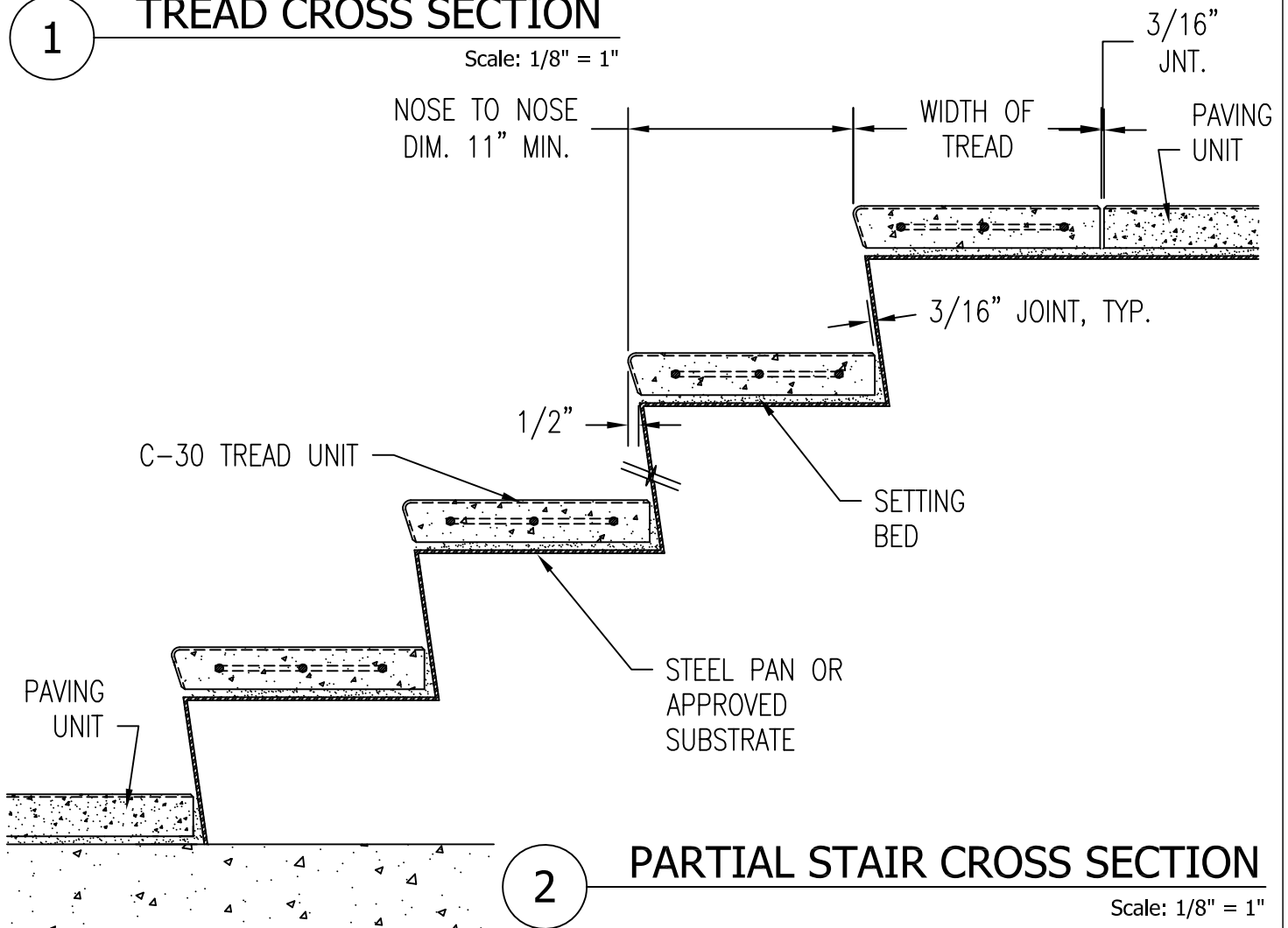
3'-0" TO 4'-0" LENGTH -  
1 3/4" MIN. THICKNESS

4'-0" TO 6'-0" LENGTH -  
2" MIN. THICKNESS

6'-0" TO 8'-0" LENGTH -  
2 1/4" MIN. THICKNESS

**1 TREAD CROSS SECTION**

Scale: 1/8" = 1"



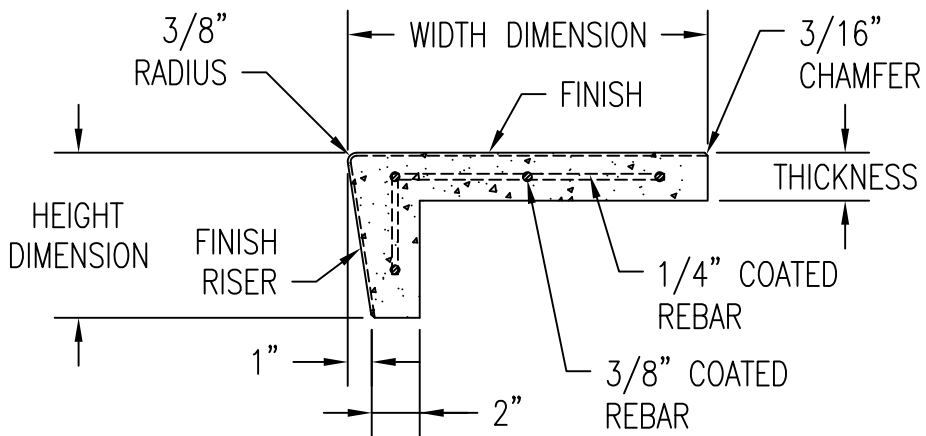
**2 PARTIAL STAIR CROSS SECTION**

Scale: 1/8" = 1"

**WAUSAU TILE SITE FURNISHINGS**

P.O. BOX 1520 WAUSAU, WISCONSIN 54402-1520 800/388-8728  
P.O. BOX 967 BANNING, CALIFORNIA 92220 877/849-5695

REVISIONS			DRAWN BY PAW	JOB C-30 TREAD WITH SETTING BED	MATERIAL PRECAST CONCRETE	
NO.	DATE	BY	TITLE C-30 TREAD	JOB NO.	WEIGHT	
1			SCALE AS NOTED	UNLESS OTHERWISE SPECIFIED DIMENSIONS ARE IN INCHES TOLERANCES: ±1/8"	FINISH OPTIONS	
2					DATE 12/17/10	DWG. NO. PC-1
3						



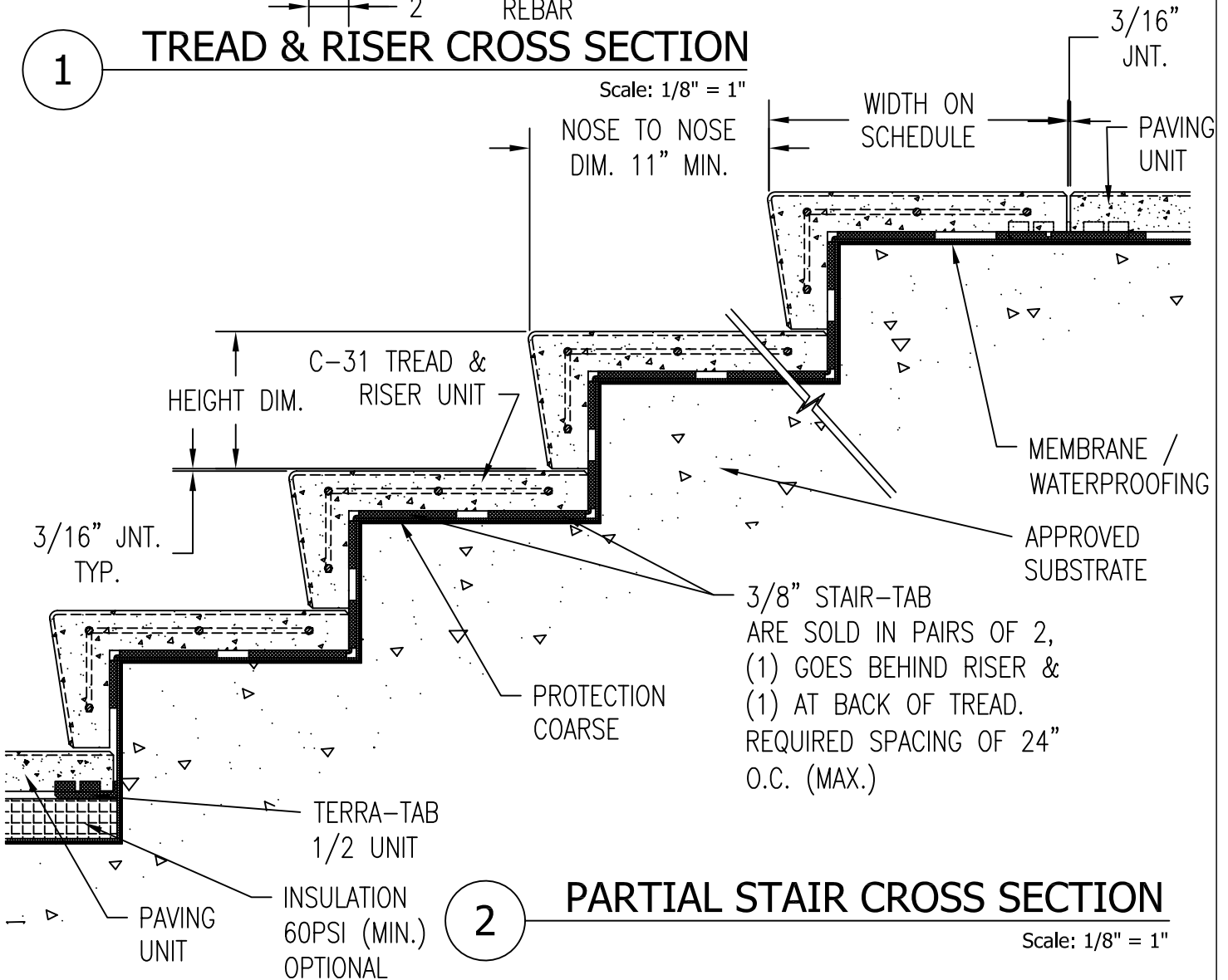
**PARAMETERS:**

3'-0" TO 4'-0" LENGTH -  
1 3/4" MIN. THICKNESS

4'-0" TO 6'-0" LENGTH -  
2" MIN. THICKNESS

6'-0" TO 8'-0" LENGTH -  
2 1/4" MIN. THICKNESS

**1 TREAD & RISER CROSS SECTION**

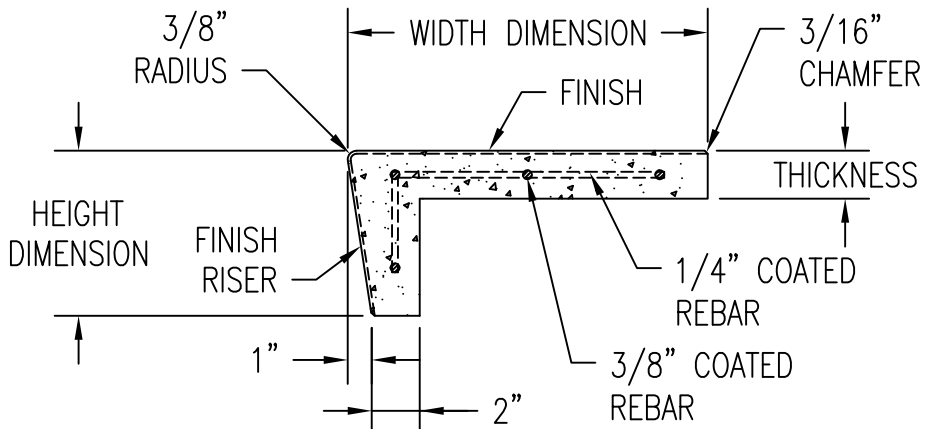


**2 PARTIAL STAIR CROSS SECTION**

**WAUSAU TILE SITE FURNISHINGS**

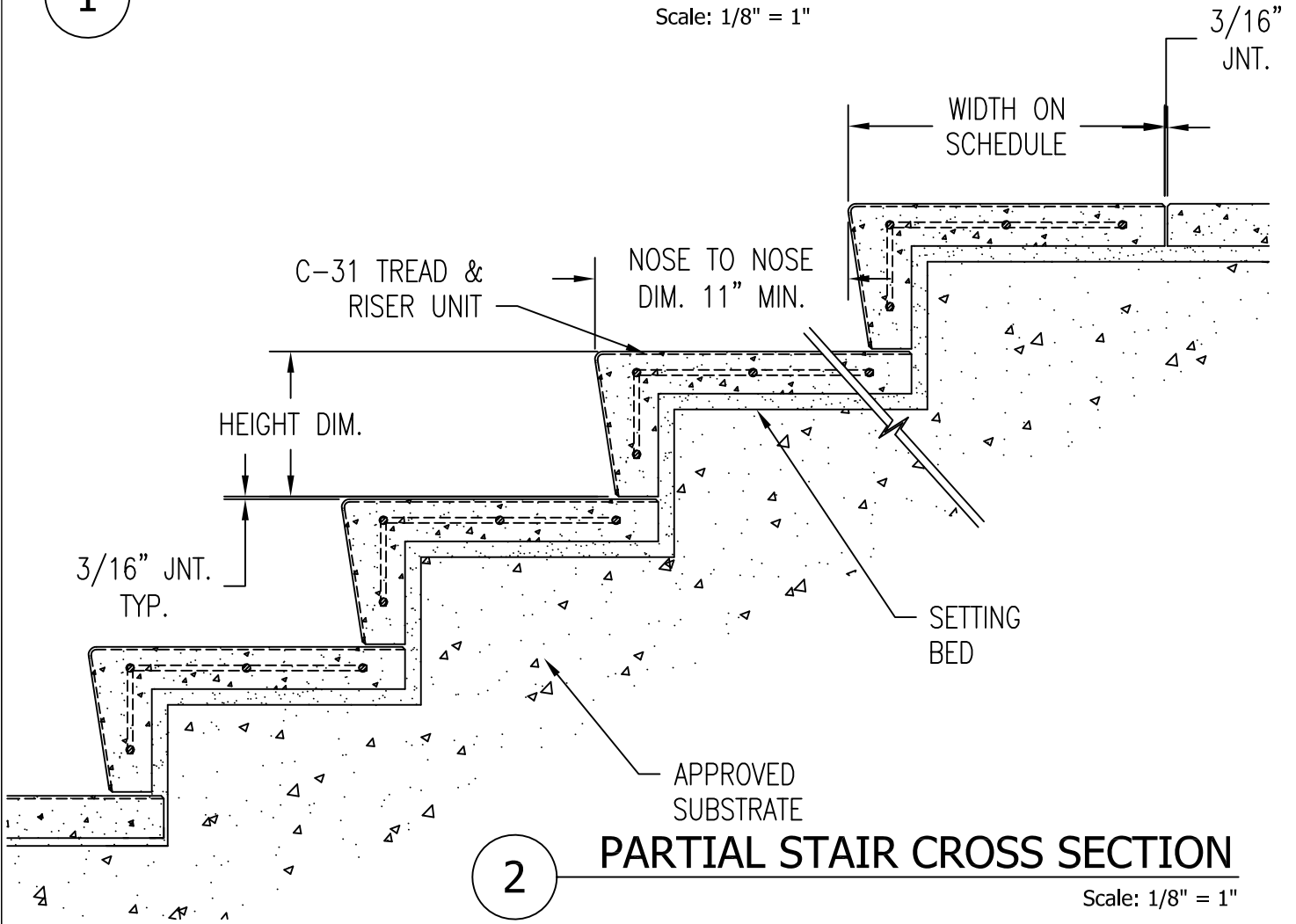
P.O. BOX 1520 WAUSAU, WISCONSIN 54402-1520 800/388-8728  
P.O. BOX 967 BANNING, CALIFORNIA 92220 877/849-5695

REVISIONS			DRAWN BY PAW	JOB C-31 TREAD & RISER TAB SET	MATERIAL PRECAST CONCRETE	
NO.	DATE	BY	TITLE C-31 TREAD & RISERS	JOB NO.	WEIGHT	
1			SCALE AS NOTED	UNLESS OTHERWISE SPECIFIED DIMENSIONS ARE IN INCHES TOLERANCES: ±1/8"	FINISH OPTIONS	
2					DATE 12/17/10	DWG. NO. PC-2A
3						



**PARAMETERS:**  
 3'-0" TO 4'-0" LENGTH -  
 1 3/4" MIN. THICKNESS  
  
 4'-0" TO 6'-0" LENGTH -  
 2" MIN. THICKNESS  
  
 6'-0" TO 8'-0" LENGTH -  
 2 1/4" MIN. THICKNESS

**1 TREAD & RISER CROSS SECTION**  
 Scale: 1/8" = 1"

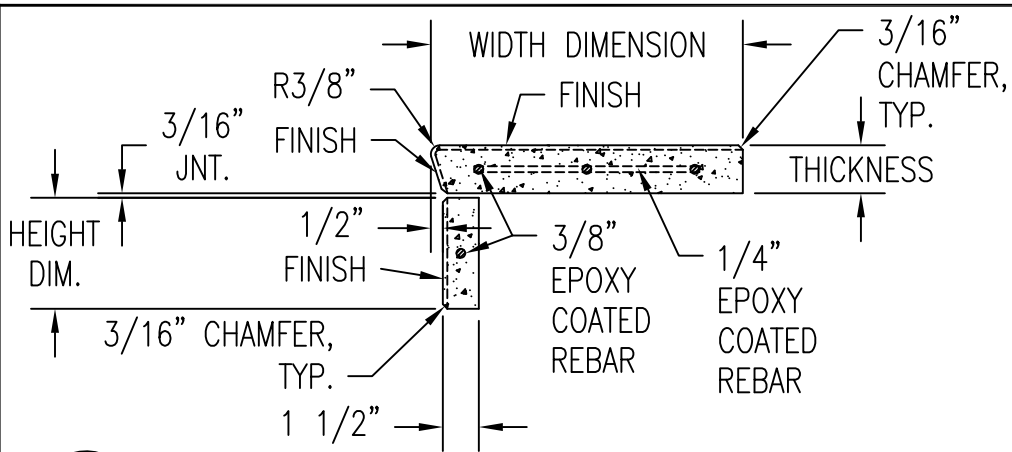


**2 PARTIAL STAIR CROSS SECTION**  
 Scale: 1/8" = 1"

**WAUSAU TILE SITE FURNISHINGS**

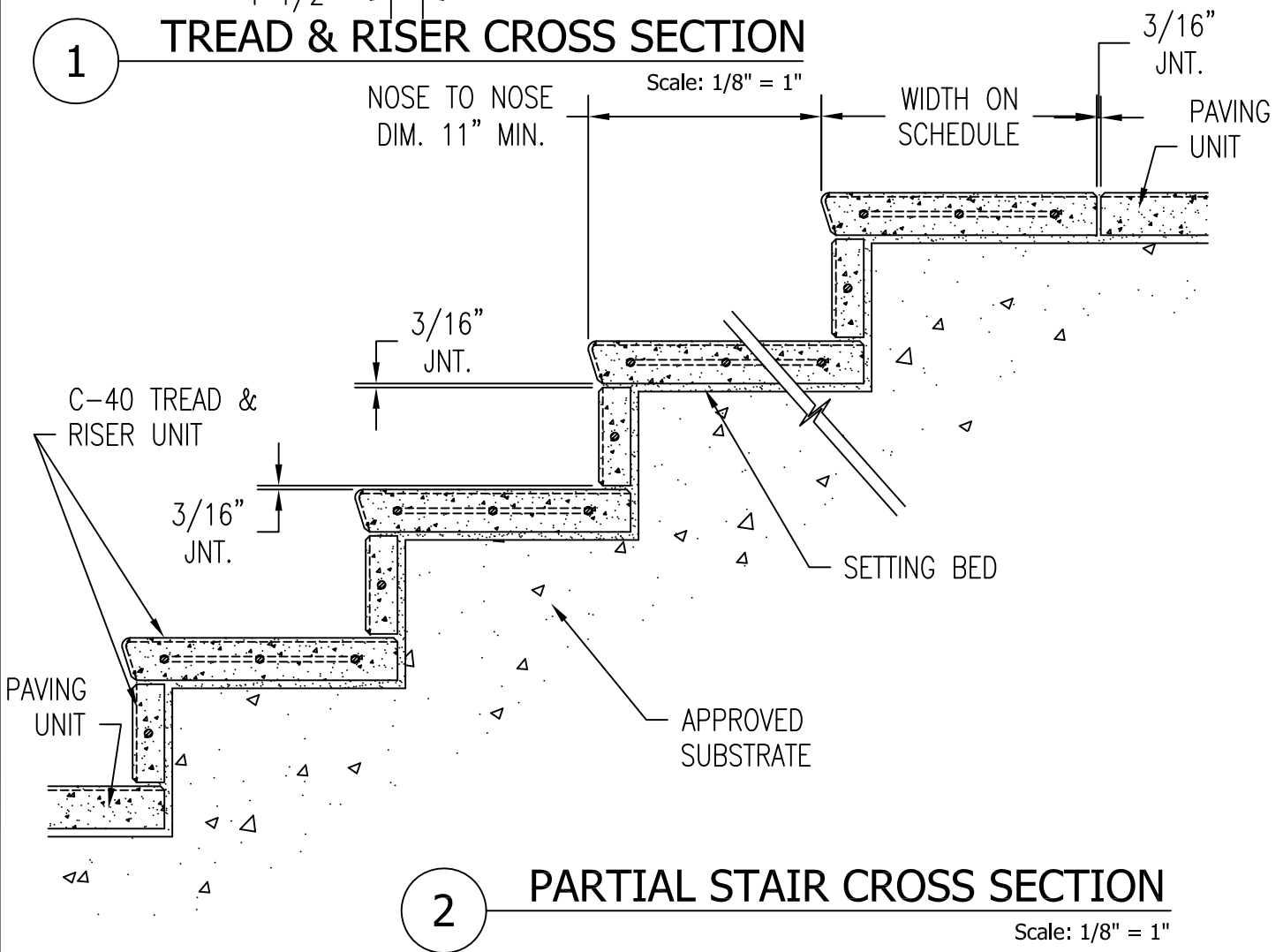
P.O. BOX 1520 WAUSAU, WISCONSIN 54402-1520 800/388-8728  
 P.O. BOX 967 BANNING, CALIFORNIA 92220 877/849-5695

REVISIONS			DRAWN BY PAW	JOB C-31 TREAD & RISER WITH SETTING BED	MATERIAL PRECAST CONCRETE	
NO.	DATE	BY	TITLE C-31 TREAD & RISERS	JOB NO.	WEIGHT	
1			SCALE AS NOTED	UNLESS OTHERWISE SPECIFIED DIMENSIONS ARE IN INCHES TOLERANCES: ±1/8"	FINISH OPTIONS	
2					DATE 12/17/10	DWG. NO. PC-2B
3						



**PARAMETERS:**  
 3'-0" TO 4'-0" LENGTH - 1 3/4" MIN THICKNESS  
 4'-0" TO 6'-0" LENGTH - 2" MIN. THICKNESS  
 6'-0" TO 8'-0" LENGTH - 2 1/4" MIN. THICKNESS

**1 TREAD & RISER CROSS SECTION**

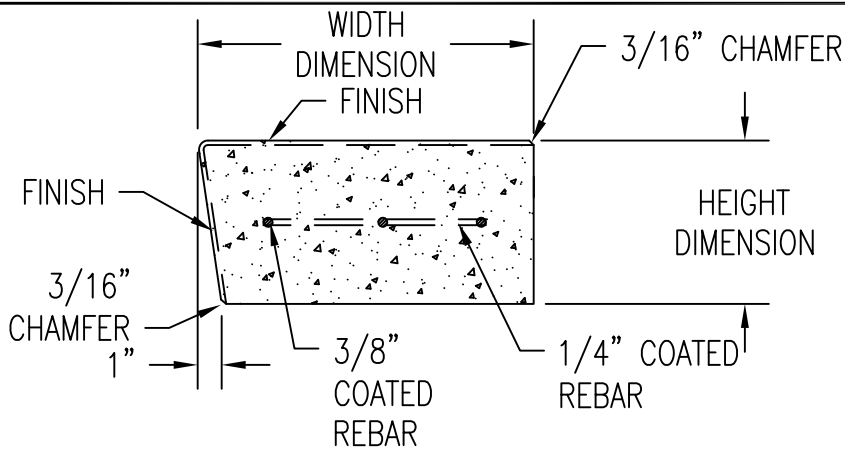


**2 PARTIAL STAIR CROSS SECTION**  
 Scale: 1/8" = 1"

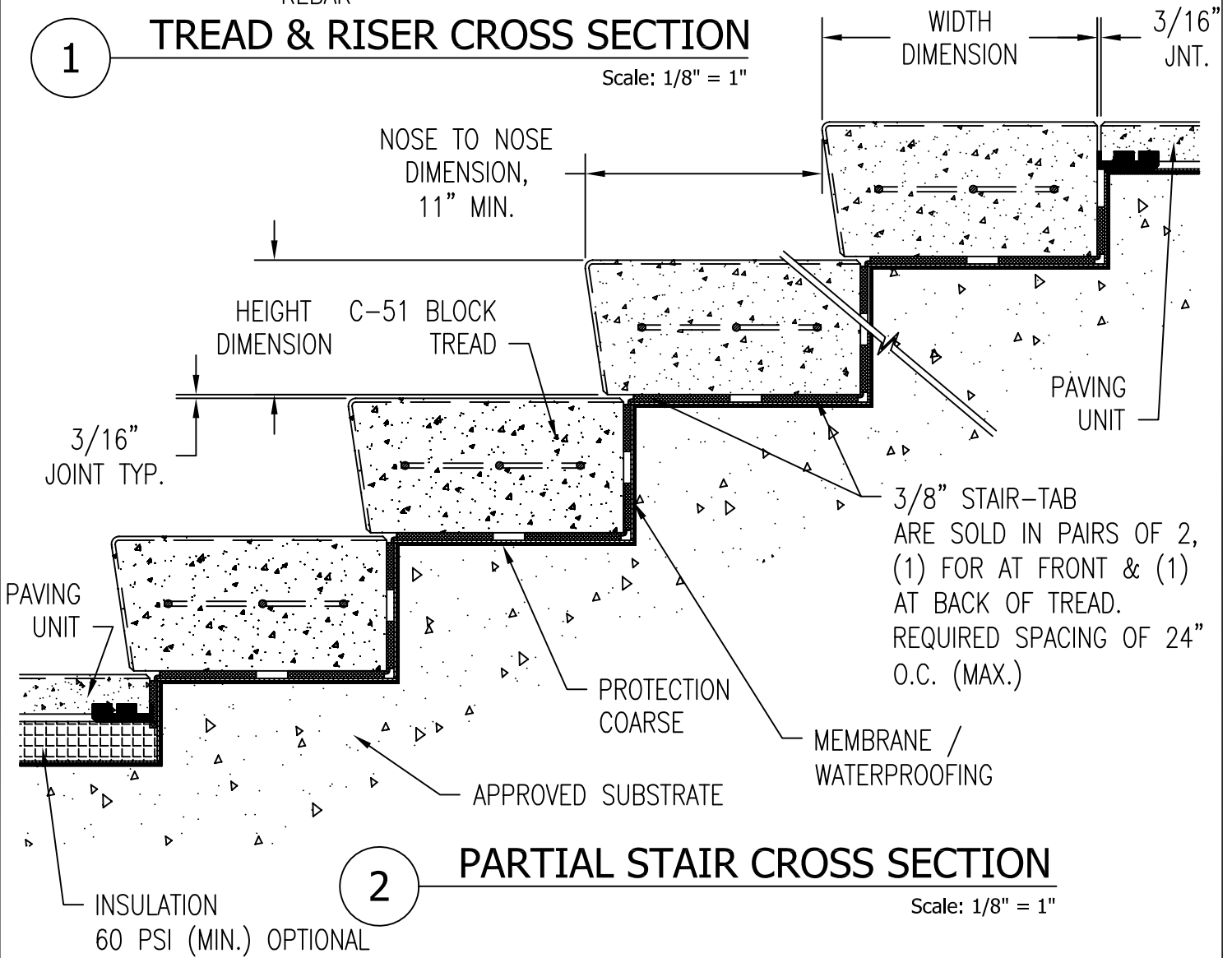
**WAUSAU TILE SITE FURNISHINGS**

P.O. BOX 1520 WAUSAU, WISCONSIN 54402-1520 800/388-8728  
 P.O. BOX 967 BANNING, CALIFORNIA 92220 877/849-5695

REVISIONS			DRAWN BY PAW	JOB C-40 TREAD & RISER WITH SETTING BED	MATERIAL PRECAST CONCRETE
NO.	DATE	BY	TITLE C-40 TREAD & RISER UNIT	JOB NO.	WEIGHT
1			SCALE AS NOTED	UNLESS OTHERWISE SPECIFIED DIMENSIONS ARE IN INCHES TOLERANCES: ±1/8"	FINISH OPTIONS
2					DATE 12/17/10
3					DWG. NO. PC-3



**1 TREAD & RISER CROSS SECTION**  
Scale: 1/8" = 1"

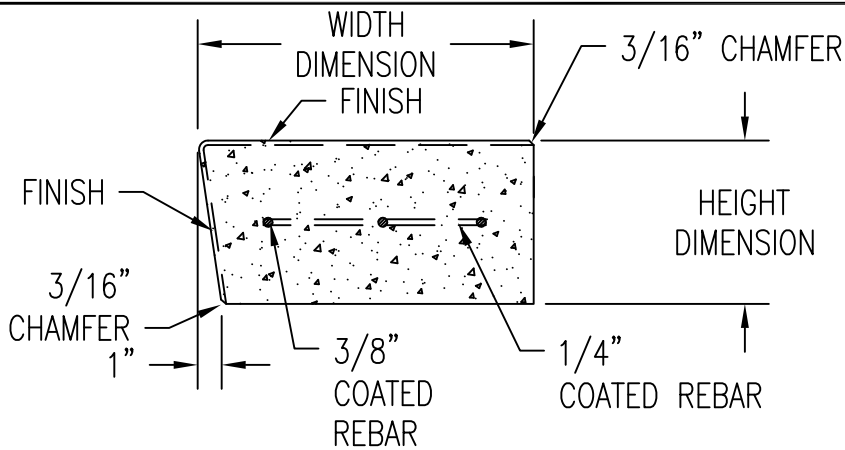


**2 PARTIAL STAIR CROSS SECTION**  
Scale: 1/8" = 1"

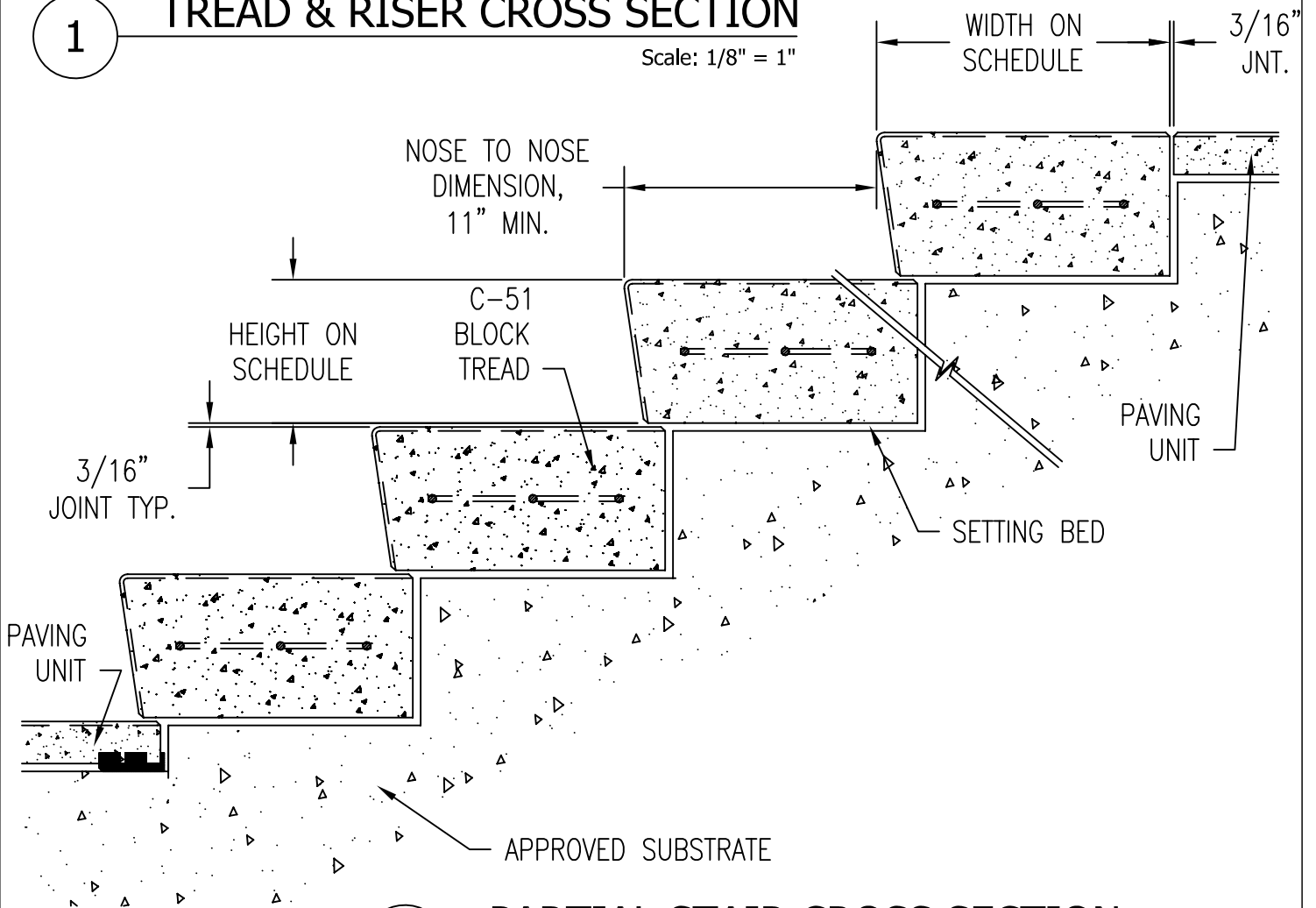
**WAUSAU TILE SITE FURNISHINGS**

P.O. BOX 1520 WAUSAU, WISCONSIN 54402-1520 800/388-8728  
P.O. BOX 967 BANNING, CALIFORNIA 92220 877/849-5695

REVISIONS			DRAWN BY PAW	JOB C-51 BLOCK TREAD TAB SET	MATERIAL PRECAST CONCRETE
NO.	DATE	BY	TITLE C-51 BLOCK TREAD	JOB NO.	WEIGHT
1			SCALE AS NOTED	UNLESS OTHERWISE SPECIFIED DIMENSIONS ARE IN INCHES TOLERANCES: ±1/8"	FINISH OPTIONS
2					DATE 12/17/10
3					



**1 TREAD & RISER CROSS SECTION**  
Scale: 1/8" = 1"

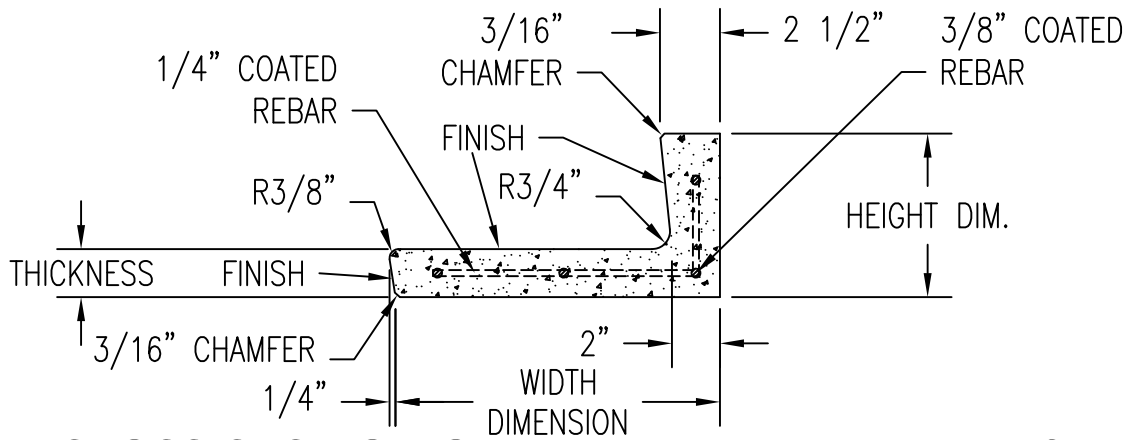


**2 PARTIAL STAIR CROSS SECTION**  
Scale: 1/8" = 1"

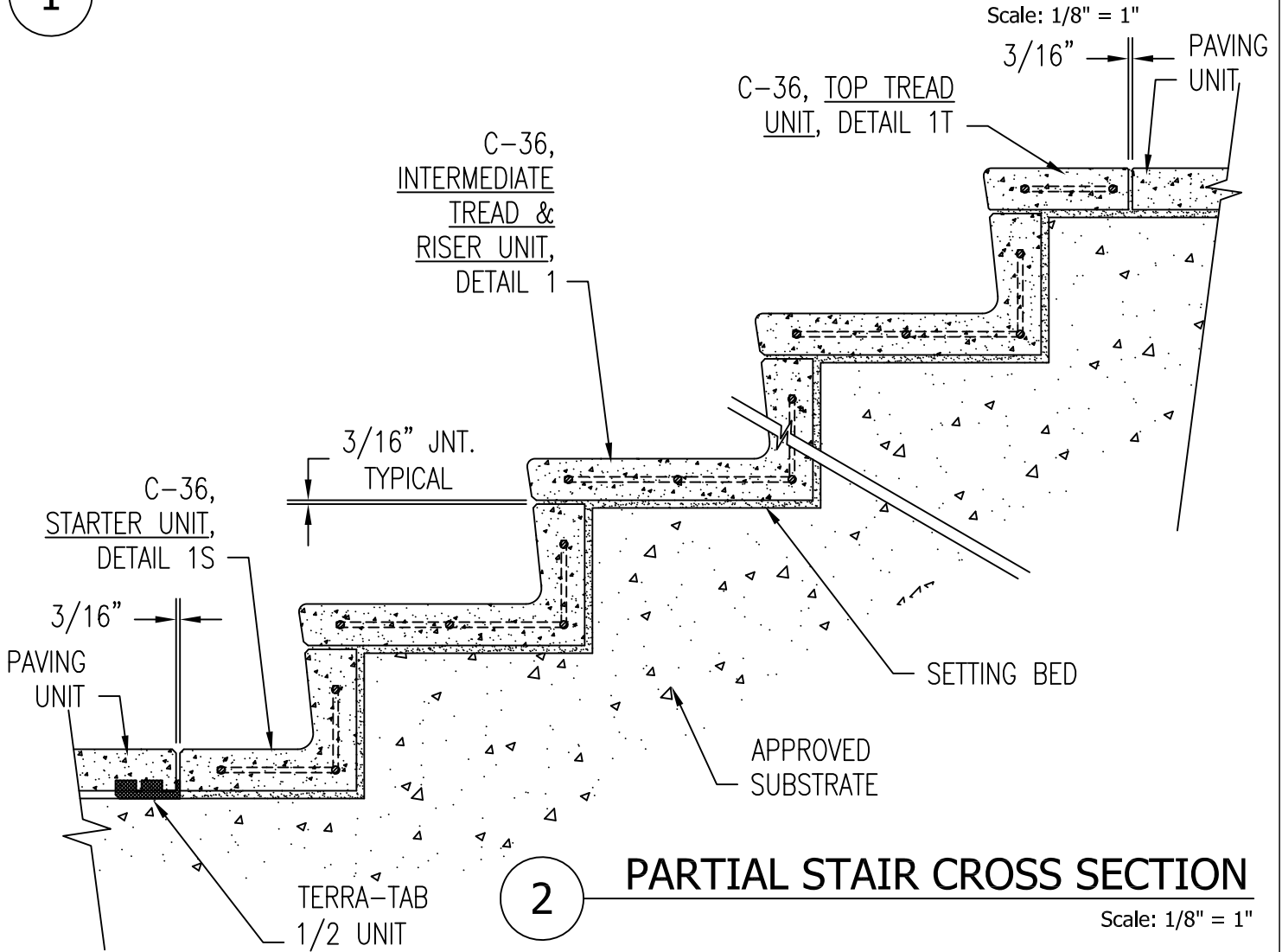
**WAUSAU TILE SITE FURNISHINGS**

P.O. BOX 1520 WAUSAU, WISCONSIN 54402-1520 800/388-8728  
P.O. BOX 967 BANNING, CALIFORNIA 92220 877/849-5695

REVISIONS			DRAWN BY PAW	JOB C-51 BLOCK TREAD SETTING BED	MATERIAL PRECAST CONCRETE
NO.	DATE	BY	TITLE C-51 BLOCK TREAD	JOB NO.	WEIGHT
1			SCALE AS NOTED	UNLESS OTHERWISE SPECIFIED DIMENSIONS ARE IN INCHES TOLERANCES: ±1/8"	FINISH OPTIONS
2					DATE 12/17/10
3					



**1** CROSS SECTION OF INTERMEDIATE TREAD & RISER

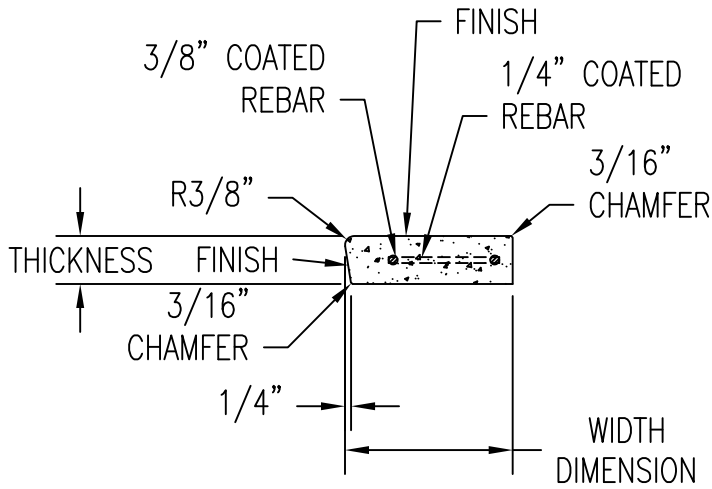


**2** PARTIAL STAIR CROSS SECTION  
Scale: 1/8" = 1"

**WAUSAU TILE SITE FURNISHINGS**

P.O. BOX 1520 WAUSAU, WISCONSIN 54402-1520 800/388-8728  
P.O. BOX 967 BANNING, CALIFORNIA 92220 877/849-5695

REVISIONS			DRAWN BY PAW	JOB C-36 TREAD & RISER WITH SETTING BED	MATERIAL PRECAST CONCRETE	
NO.	DATE	BY	TITLE C-36 TREAD & RISERS	JOB NO.	WEIGHT	
1			SCALE AS NOTED	UNLESS OTHERWISE SPECIFIED DIMENSIONS ARE IN INCHES TOLERANCES: ±1/8"	FINISH OPTIONS	
2					DATE 12/17/10	DWG. NO. PC-5
3						1 OF 2



**PARAMETERS:**

3'-0" TO 4'-0" LENGTH -  
1 3/4" MIN. THICKNESS

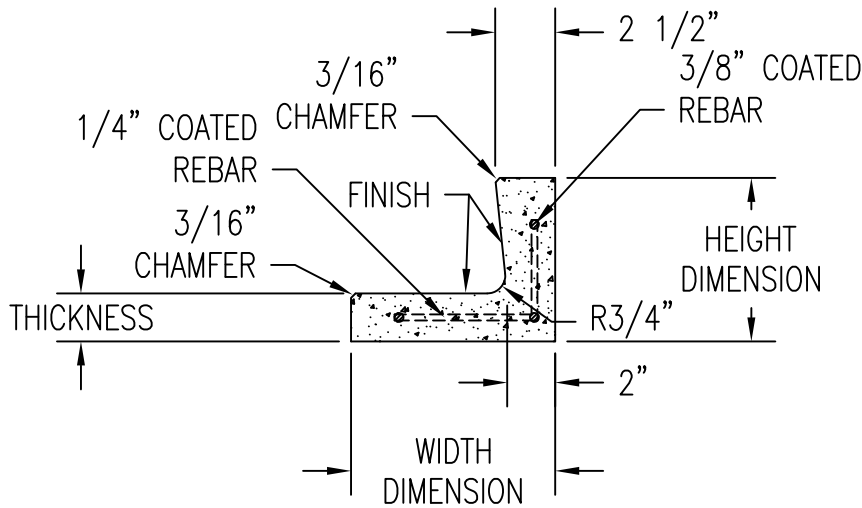
4'-0" TO 6'-0" LENGTH -  
2" MIN. THICKNESS

6'-0" TO 8'-0" LENGTH -  
2 1/4" MIN. THICKNESS

1T

**CROSS SECTION OF TOP TREAD**

Scale: 1/8" = 1"



1S

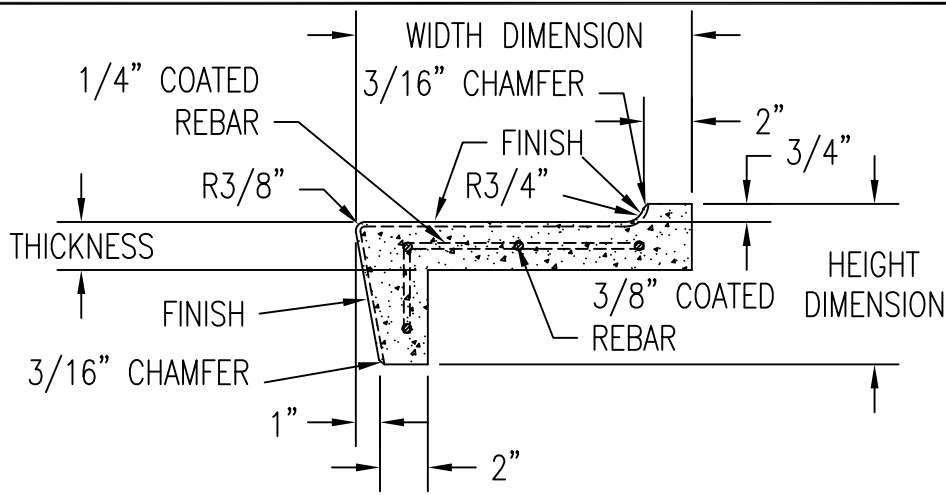
**CROSS SECTION OF STARTER TREAD & RISER**

Scale: 1/8" = 1"

**WAUSAU TILE SITE FURNISHINGS**

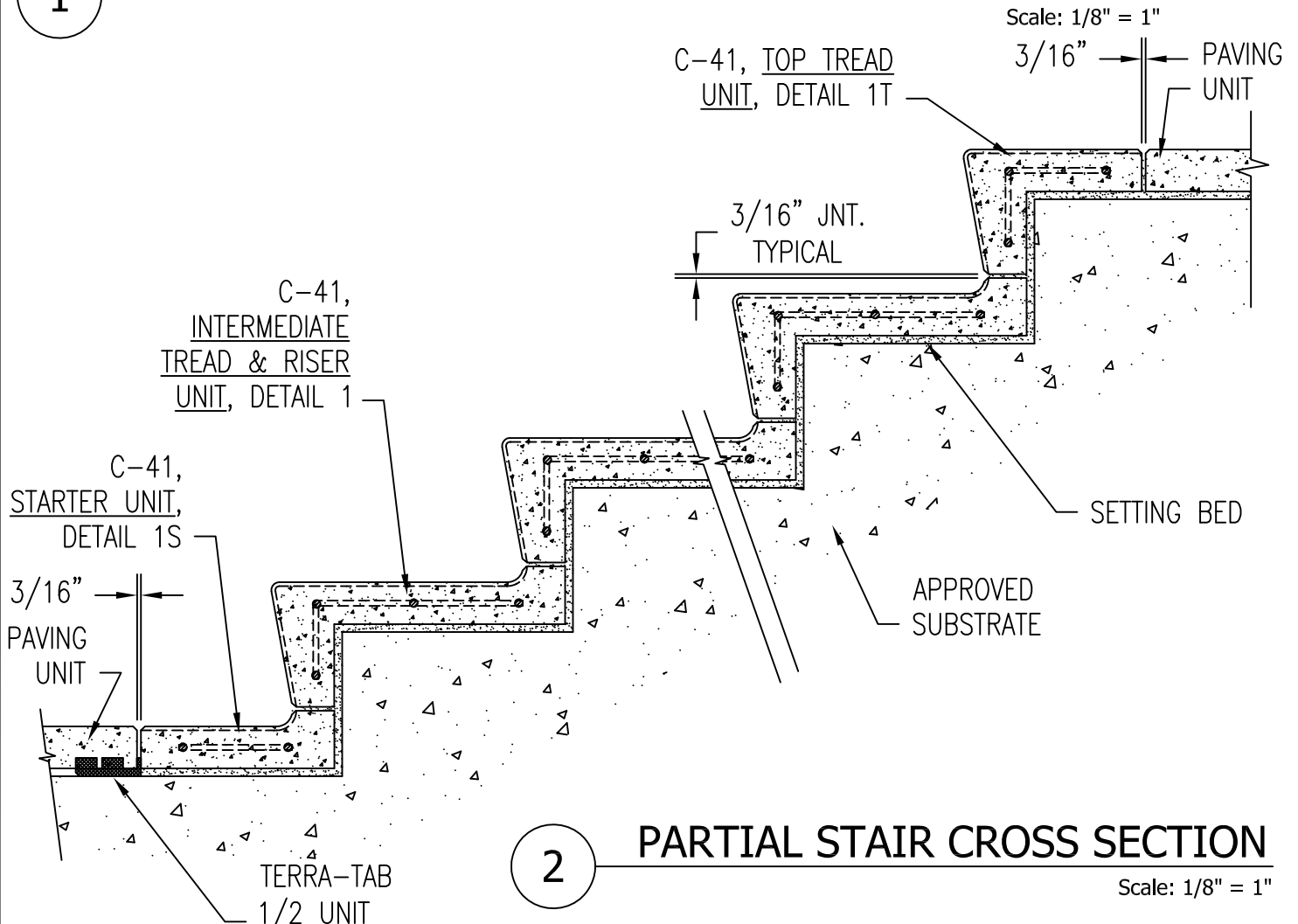
P.O. BOX 1520 WAUSAU, WISCONSIN 54402-1520 800/388-8728  
P.O. BOX 967 BANNING, CALIFORNIA 92220 877/849-5695

REVISIONS			DRAWN BY PAW	JOB C-36 TREAD & RISER WITH SETTING BED	MATERIAL PRECAST CONCRETE	
NO.	DATE	BY	TITLE C-36 TREAD & RISERS	JOB NO.	WEIGHT	
1			SCALE AS NOTED	UNLESS OTHERWISE SPECIFIED DIMENSIONS ARE IN INCHES TOLERANCES: ±1/8"	FINISH OPTIONS	
2					DATE 12/17/10	DWG. NO. PC-5
3						2 OF 2



1

**CROSS SECTION OF INTERMEDIATE TREAD & RISER**



2

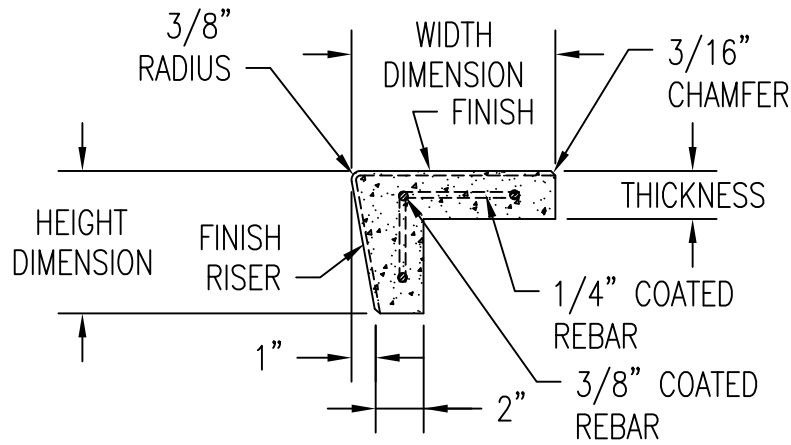
**PARTIAL STAIR CROSS SECTION**

Scale: 1/8" = 1"

**WAUSAU TILE SITE FURNISHINGS**

P.O. BOX 1520 WAUSAU, WISCONSIN 54402-1520 800/388-8728  
 P.O. BOX 967 BANNING, CALIFORNIA 92220 877/849-5695

REVISIONS			DRAWN BY PAW	JOB C-41 TREAD & RISER WITH SETTING BED	MATERIAL PRECAST CONCRETE	
NO.	DATE	BY	TITLE C-41 TREAD & RISERS	JOB NO.	WEIGHT	
1			SCALE AS NOTED	UNLESS OTHERWISE SPECIFIED DIMENSIONS ARE IN INCHES TOLERANCES: ±1/8"	FINISH OPTIONS	
2					DATE 12/17/10	DWG. NO. PC-6
3						1 OF 2



**PARAMETERS:**

3'-0" TO 4'-0" LENGTH -  
1 3/4" MIN. THICKNESS

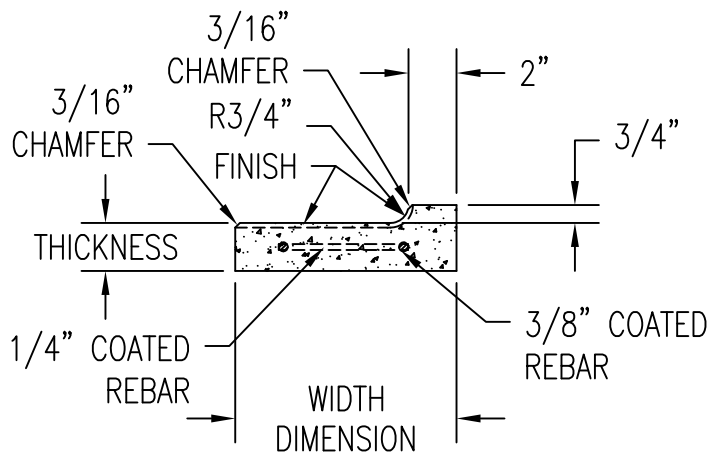
4'-0" TO 6'-0" LENGTH -  
2" MIN. THICKNESS

6'-0" TO 8'-0" LENGTH -  
2 1/4" MIN. THICKNESS

1T

**CROSS SECTION OF TOP TREAD & RISER**

Scale: 1/8" = 1"



1S

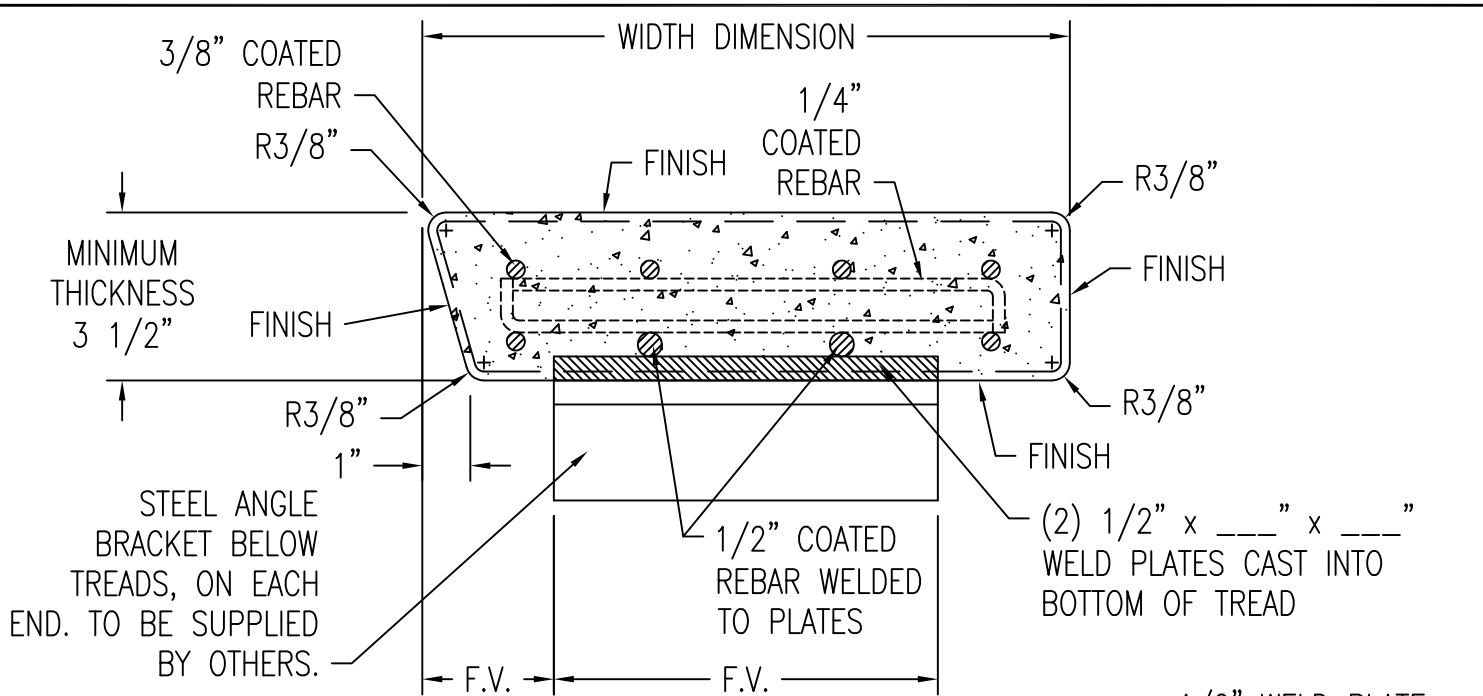
**CROSS SECTION OF STARTER PIECE**

Scale: 1/8" = 1"

**WAUSAU TILE SITE FURNISHINGS**

P.O. BOX 1520 WAUSAU, WISCONSIN 54402-1520 800/388-8728  
P.O. BOX 967 BANNING, CALIFORNIA 92220 877/849-5695

REVISIONS			DRAWN BY PAW	JOB C-41 TREAD & RISER WITH SETTING BED	MATERIAL PRECAST CONCRETE	
NO.	DATE	BY	TITLE C-41 TREAD & RISERS	JOB NO.	WEIGHT	
1			SCALE AS NOTED	UNLESS OTHERWISE SPECIFIED DIMENSIONS ARE IN INCHES TOLERANCES: ±1/8"	FINISH OPTIONS	
2					DATE 12/17/10	DWG. NO. PC-6
3						2 OF 2

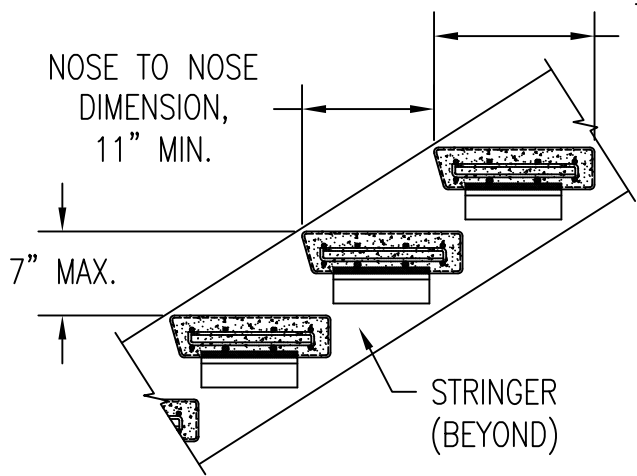


**1 TREAD CROSS SECTION**  
Scale: 1/4" = 1"

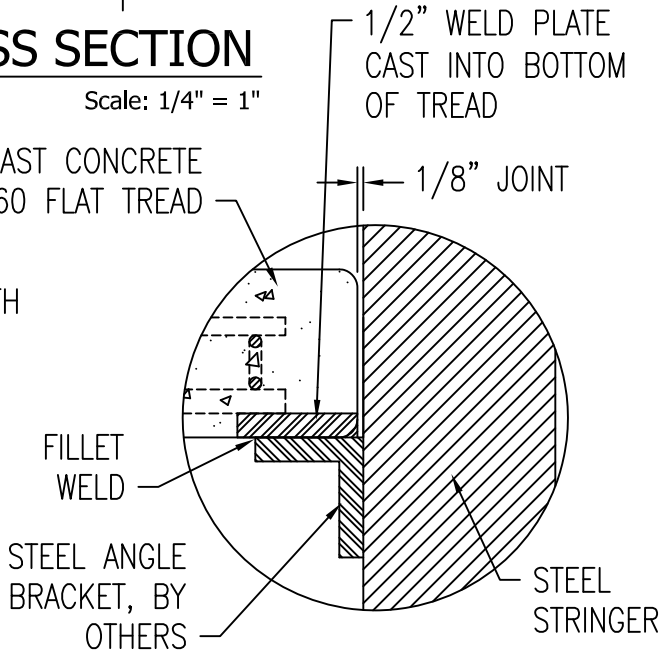
**PARAMETERS**

THICKNESS SHALL BE CALCULATED BY AN ENGINEER, MINIMUM THICKNESS TO BE 3 1/2".

PRECAST CONCRETE C-60 FLAT TREAD



**2 PARTIAL STAIR CROSS SECTION**  
Scale: 1/16" = 1"

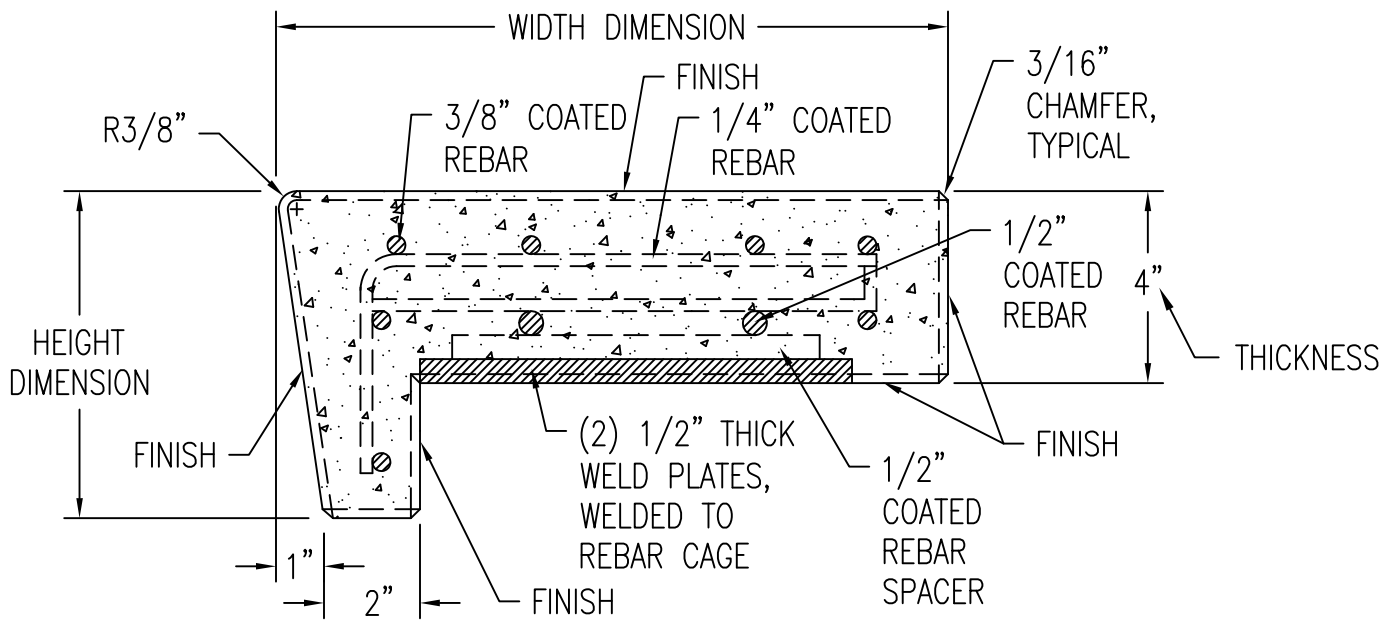


**3 ANCHORING DETAIL**  
Scale: 1/4" = 1"

**WAUSAU TILE SITE FURNISHINGS**

P.O. BOX 1520 WAUSAU, WISCONSIN 54402-1520 800/388-8728  
P.O. BOX 967 BANNING, CALIFORNIA 92220 877/849-5695

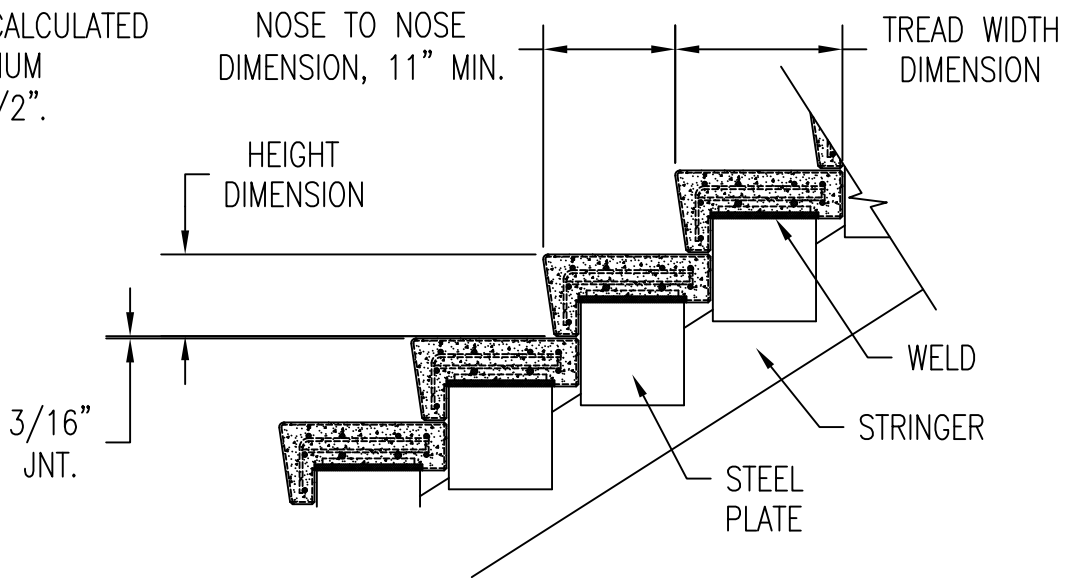
REVISIONS			DRAWN BY PAW	JOB C-60 SELF SUPPORTING FLAT TREAD	MATERIAL PRECAST CONCRETE	
NO.	DATE	BY	TITLE C-60 SELF SUPPORTING FLAT TREAD	JOB NO.	WEIGHT	
1				UNLESS OTHERWISE SPECIFIED DIMENSIONS ARE IN INCHES TOLERANCES: ±1/8"	DATE 12/17/10	FINISH OPTIONS
2					SCALE AS NOTED	DWG. NO. PC-7
3						



**1 TREAD & RISER CROSS SECTION**  
Scale: 1/4" = 1"

PARAMETERS

THICKNESS SHALL BE CALCULATED BY AN ENGINEER, MINIMUM THICKNESS TO BE 3 1/2".

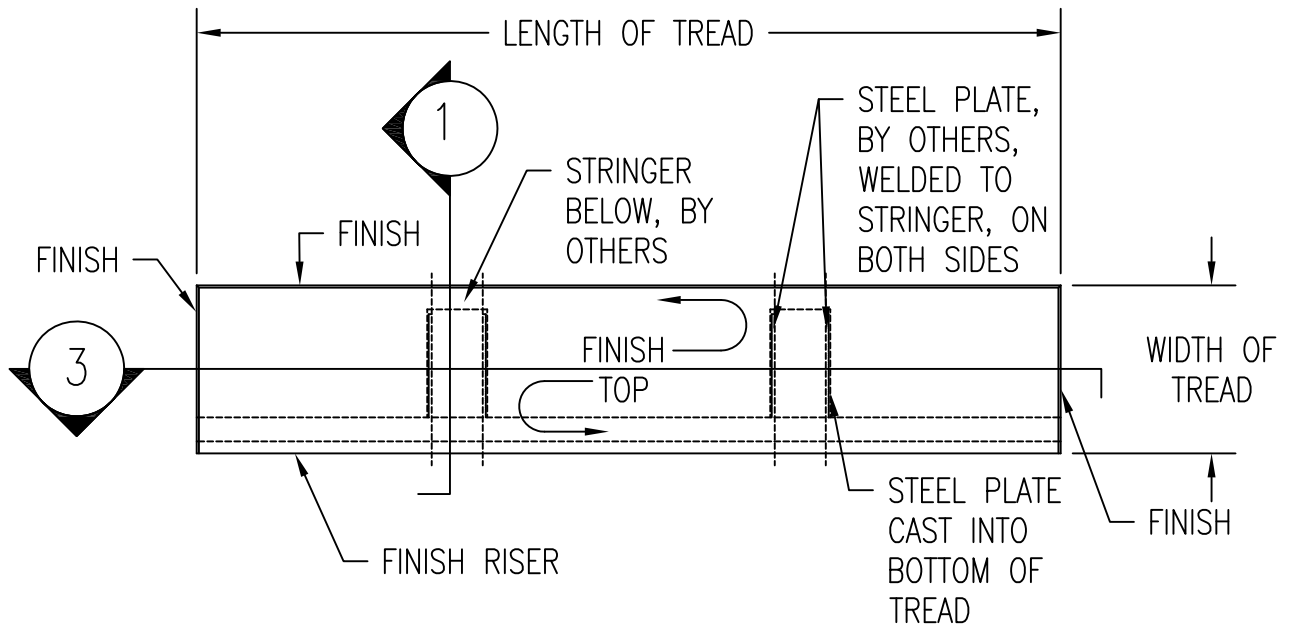


**2 PARTIAL STAIR CROSS SECTION**  
Scale: 1/16" = 1"

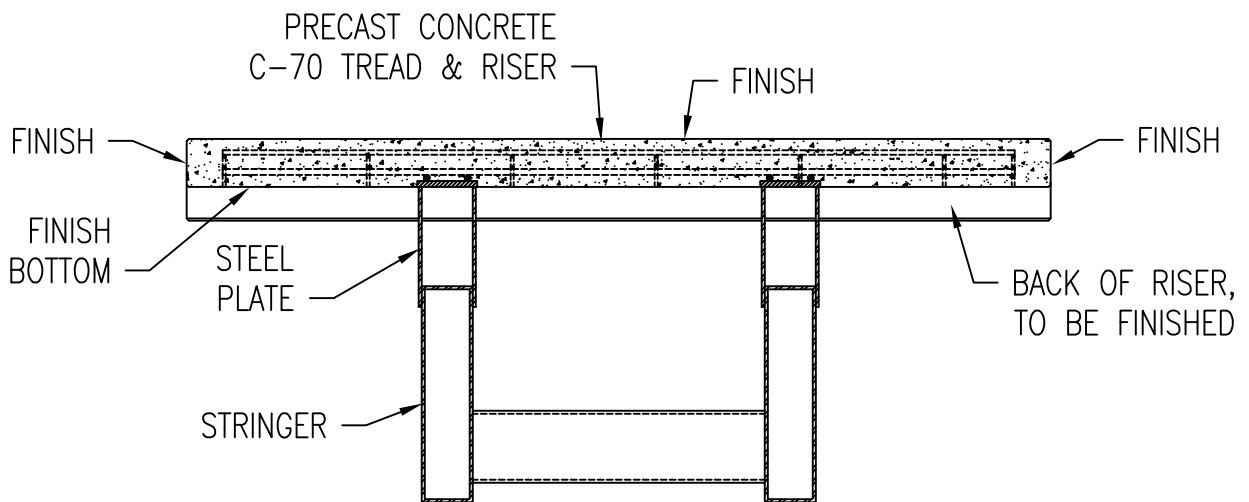
**WAUSAU TILE SITE FURNISHINGS**

P.O. BOX 1520 WAUSAU, WISCONSIN 54402-1520 800/388-8728  
P.O. BOX 967 BANNING, CALIFORNIA 92220 877/849-5695

REVISIONS			DRAWN BY PAW	JOB C-70, SELF SUPPORTING TREAD & RISERS, DUAL SUPPORTED	MATERIAL PRECAST CONCRETE	
NO.	DATE	BY	TITLE C-70, SELF SUPPORTING TREAD & RISERS, DUAL SUPPORTED	JOB NO.	WEIGHT	
1				UNLESS OTHERWISE SPECIFIED DIMENSIONS ARE IN INCHES TOLERANCES: ±1/8"	DATE 12/17/10	FINISH OPTIONS
2					DWG. NO. PC-8	1 OF 2
3			SCALE AS NOTED			



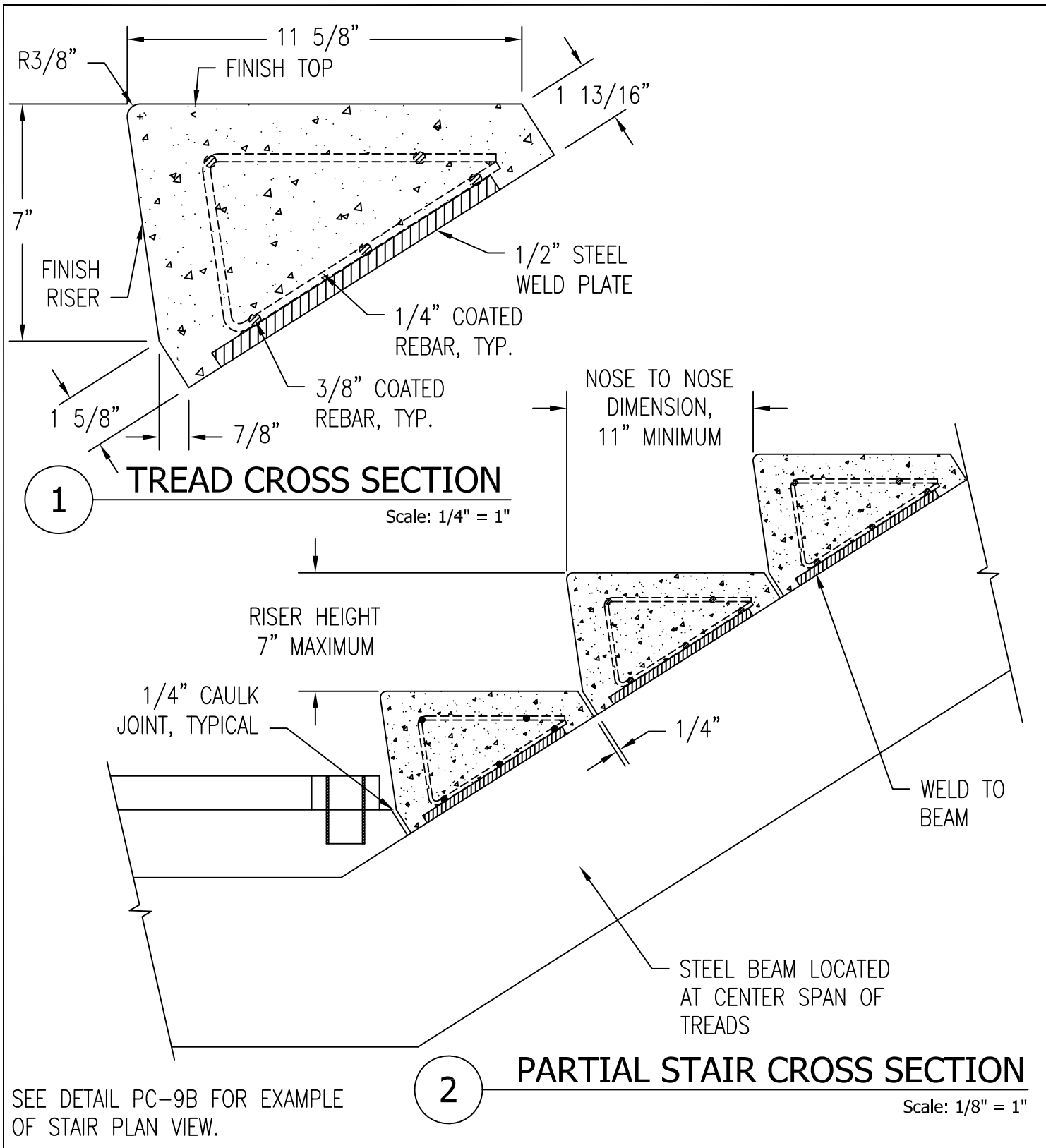
**3** TOP VIEW OF TREAD & RISER  
Scale: 1/16" = 1"



**4** CROSS SECTION OF TREAD & RISER  
Scale: 1/16" = 1"

**WAUSAU TILE SITE FURNISHINGS** P.O. BOX 1520 WAUSAU, WISCONSIN 54402-1520 800/388-8728  
P.O. BOX 967 BANNING, CALIFORNIA 92220 877/849-5695

REVISIONS			DRAWN BY	JOB	MATERIAL
			PAW	C-70, SELF SUPPORTING TREAD & RISERS, DUAL SUPPORTED	PRECAST CONCRETE
NO.	DATE	BY	TITLE	JOB NO.	WEIGHT
1			C-70, SELF SUPPORTING TREAD & RISERS, DUAL SUPPORTED		
2				UNLESS OTHERWISE SPECIFIED DIMENSIONS ARE IN INCHES TOLERANCES: ±1/8"	DATE 12/17/10
3			SCALE AS NOTED		FINISH OPTIONS
					DWG. NO. PC-8 2 OF 2

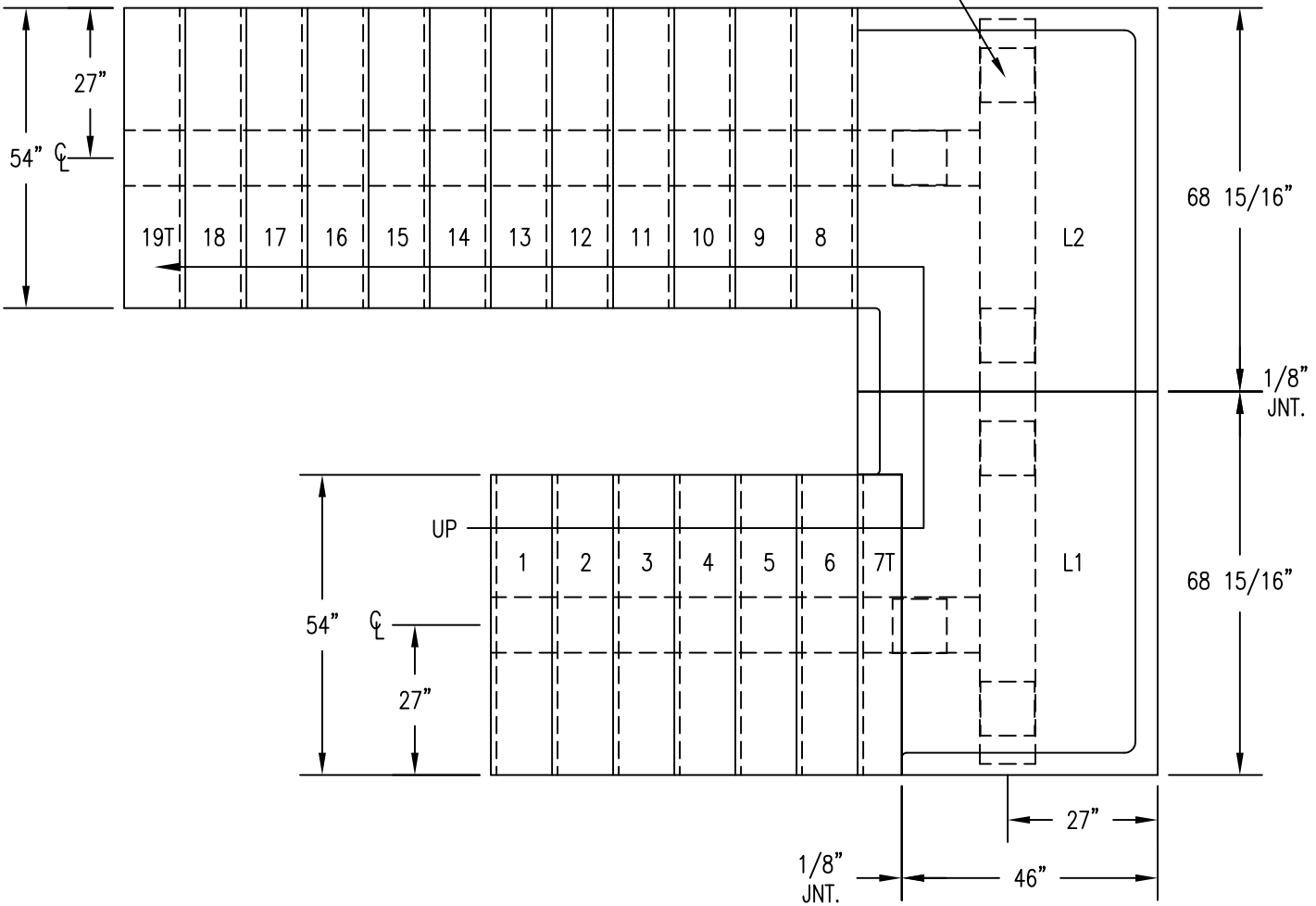


# WAUSAU TILE SITE FURNISHINGS

P.O. BOX 1520 WAUSAU, WISCONSIN 54402-1520 800/388-8728  
P.O. BOX 967 BANNING, CALIFORNIA 92220 877/849-5695

REVISIONS			DRAWN BY	JOB	MATERIAL
NO.	DATE	BY	PAW	SELF SUPPORTING TEAR DROP TREADS	PRECAST CONCRETE
1				JOB NO.	WEIGHT
2			SCALE	UNLESS OTHERWISE SPECIFIED DIMENSIONS ARE IN INCHES TOLERANCES: ±1/8"	FINISH OPTIONS
3			AS NOTED		DATE 12/17/10

9 3/4" SQUARE WELD  
PLATE 6" OFF EDGE  
(TYPICAL)



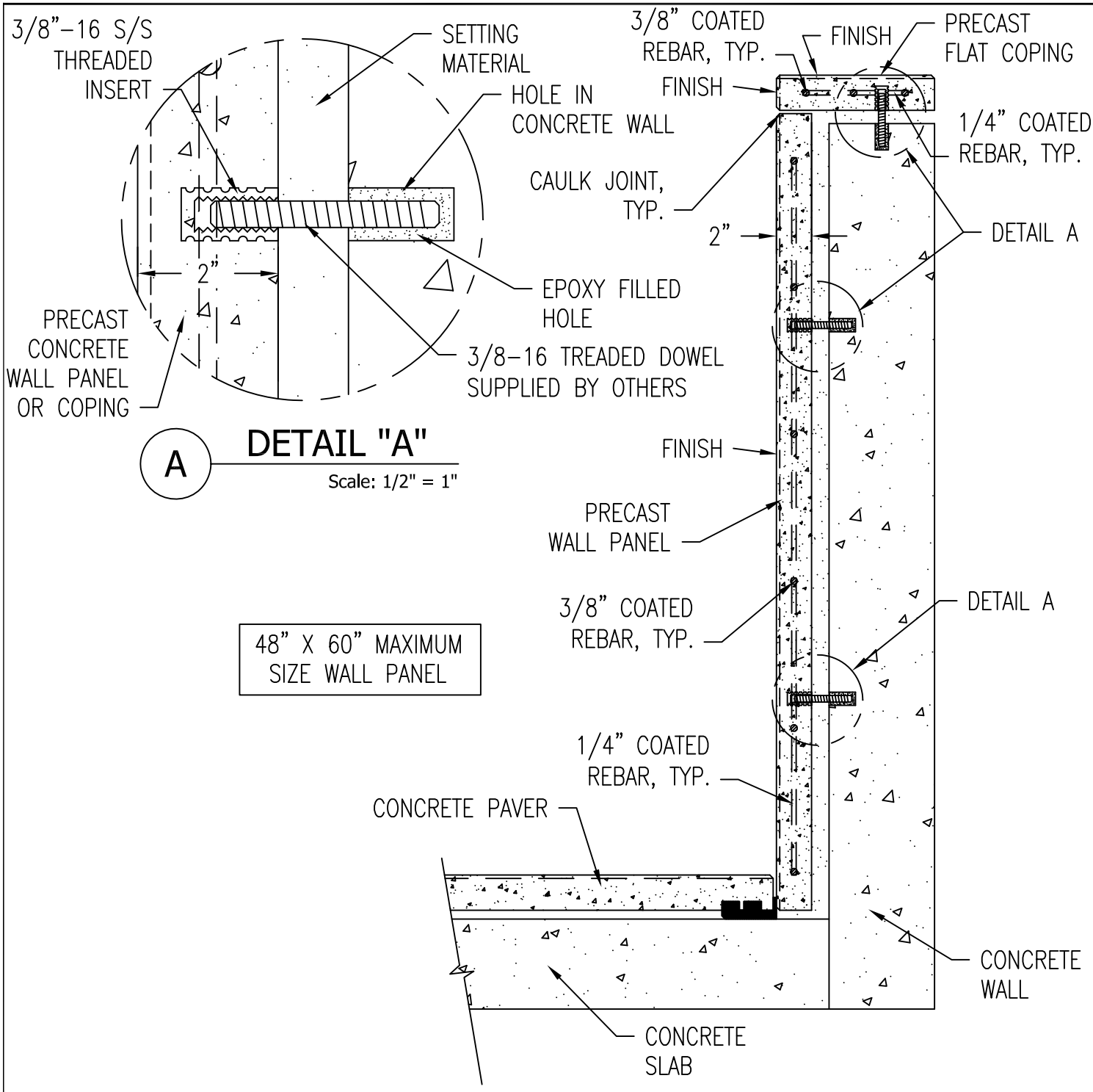
**1 STAIR PLAN VIEW - SELF SUPPORTED, CENTER MOUNT**

Scale: 1/32" = 1"

SEE DETAIL PC-9A FOR SECTION & DETAILS.

**WAUSAU TILE SITE FURNISHINGS** P.O. BOX 1520 WAUSAU, WISCONSIN 54402-1520 800/388-8728  
P.O. BOX 967 BANNING, CALIFORNIA 92220 877/849-5695

REVISIONS			DRAWN BY PAW	JOB CENTER MOUNT, SELF SUPPORTING TREADS	MATERIAL PRECAST CONCRETE	
NO.	DATE	BY	TITLE CENTER MOUNT SELF SUPPORTING TREADS	JOB NO.	WEIGHT	
1				UNLESS OTHERWISE SPECIFIED DIMENSIONS ARE IN INCHES TOLERANCES: .±1/8"	DATE 12/17/10	FINISH OPTIONS
2					DWG. NO. PC-9B	
3			SCALE AS NOTED			



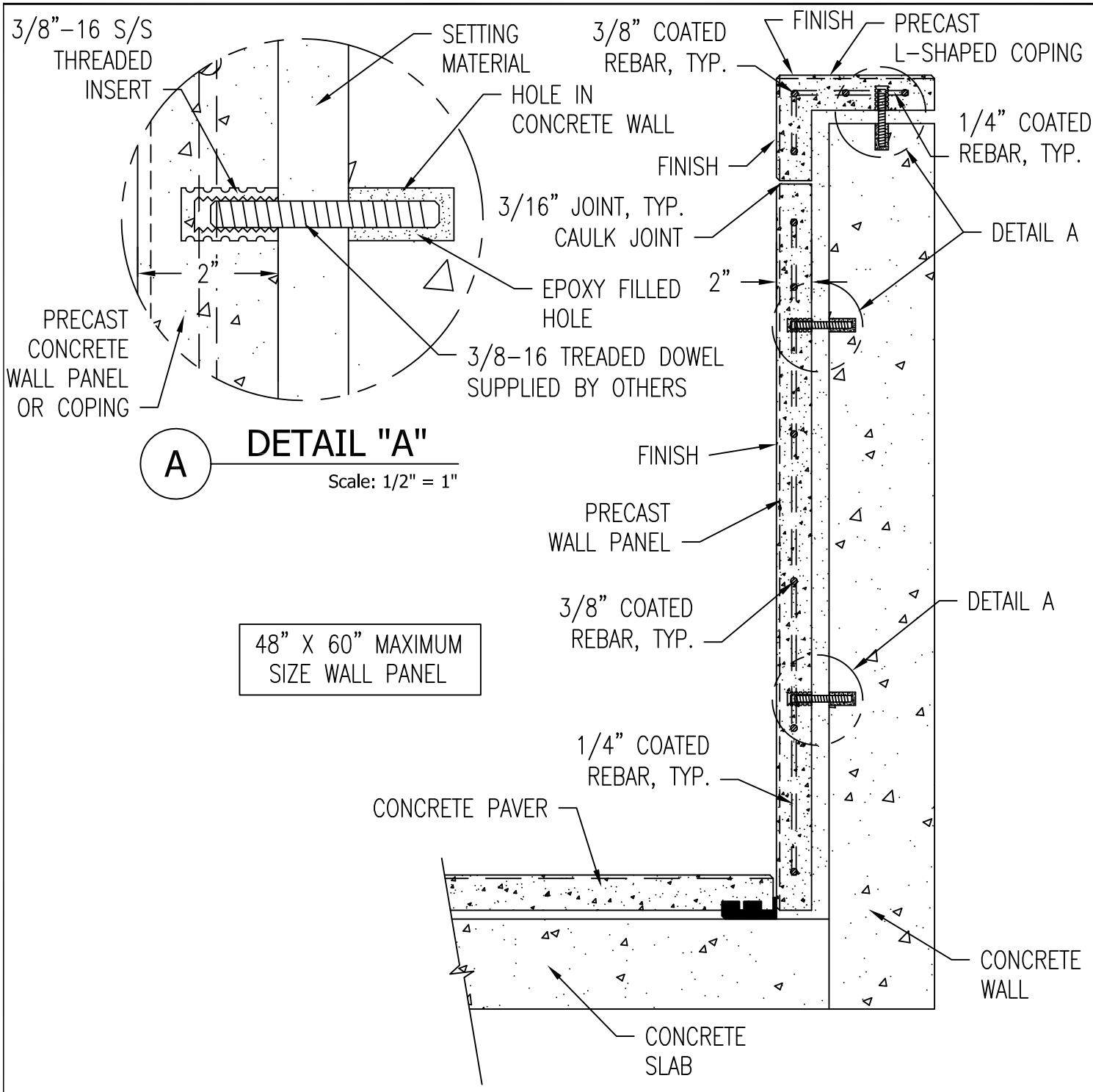
**A** **DETAIL "A"**  
Scale: 1/2" = 1"

48" X 60" MAXIMUM  
SIZE WALL PANEL

**1** **CROSS SECTION OF WALL PANEL & FLAT COPING**  
Scale: 1/8" = 1"

**WAUSAU TILE SITE FURNISHINGS** P.O. BOX 1520 WAUSAU, WISCONSIN 54402-1520 800/388-8728  
P.O. BOX 967 BANNING, CALIFORNIA 92220 877/849-5695

REVISIONS			DRAWN BY PAW	JOB WALL PANEL WITH FLAT COPING	MATERIAL PRECAST CONCRETE
NO.	DATE	BY	TITLE WALL PANEL WITH FLAT COPING	JOB NO.	WEIGHT
1			SCALE AS NOTED	UNLESS OTHERWISE SPECIFIED DIMENSIONS ARE IN INCHES TOLERANCES: ±1/8"	DATE 12/17/10
2					FINISH OPTIONS
3					DWG. NO. PC-10



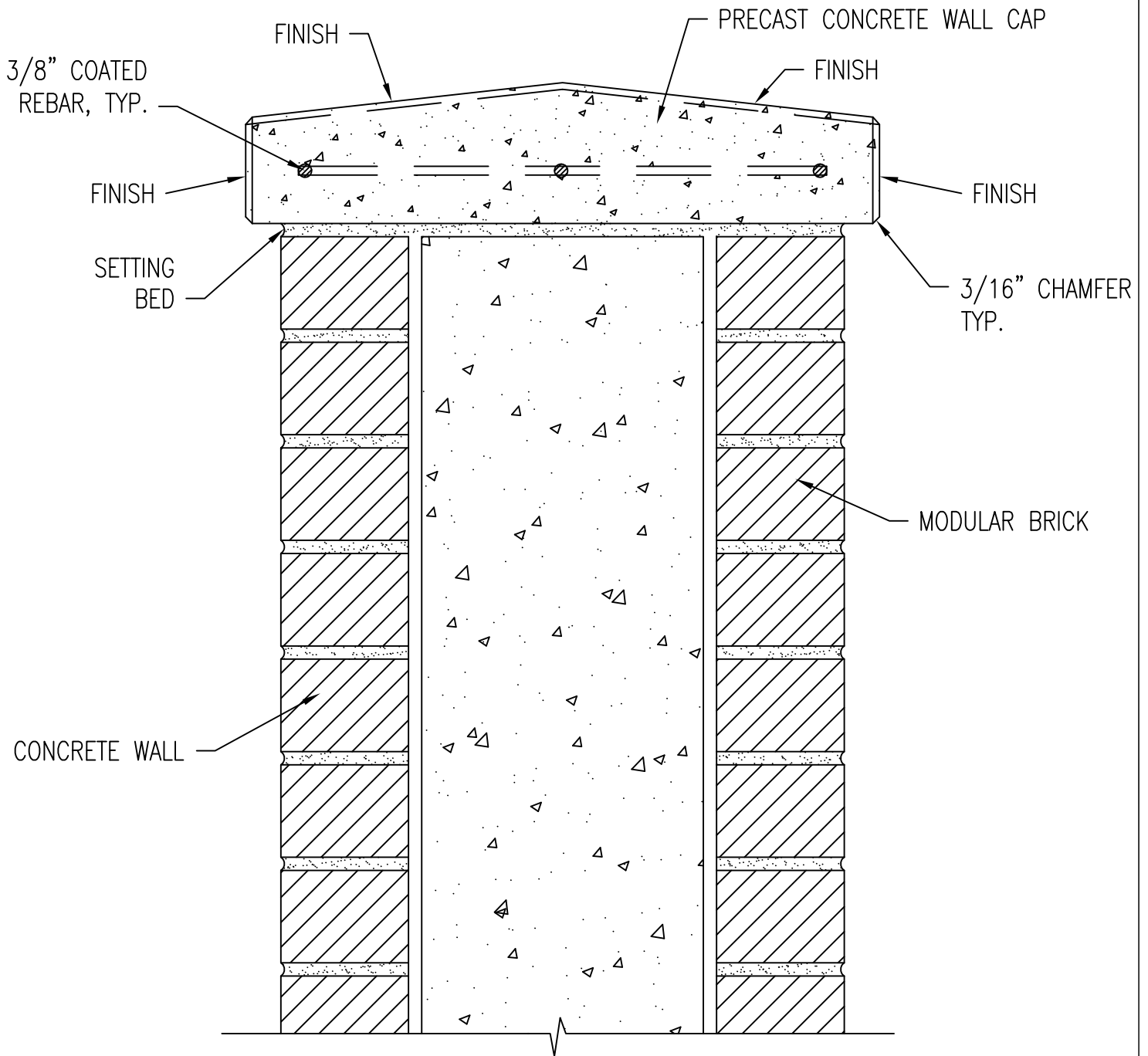
**A** **DETAIL "A"**  
Scale: 1/2" = 1"

48" X 60" MAXIMUM  
SIZE WALL PANEL

**1** **CROSS SECTION OF WALL PANEL & FLAT COPING**  
Scale: 1/8" = 1"

**WAUSAU TILE SITE FURNISHINGS** P.O. BOX 1520 WAUSAU, WISCONSIN 54402-1520 800/388-8728  
P.O. BOX 967 BANNING, CALIFORNIA 92220 877/849-5695

REVISIONS			DRAWN BY PAW	JOB WALL PANEL WITH L-SHAPED COPING	MATERIAL PRECAST CONCRETE	
NO.	DATE	BY	TITLE WALL PANEL WITH L-SHAPED COPING	JOB NO.	WEIGHT	
1			SCALE AS NOTED	UNLESS OTHERWISE SPECIFIED DIMENSIONS ARE IN INCHES TOLERANCES: ±1/8"	FINISH OPTIONS	
2					DATE 12/17/10	DWG. NO. PC-11
3						



1

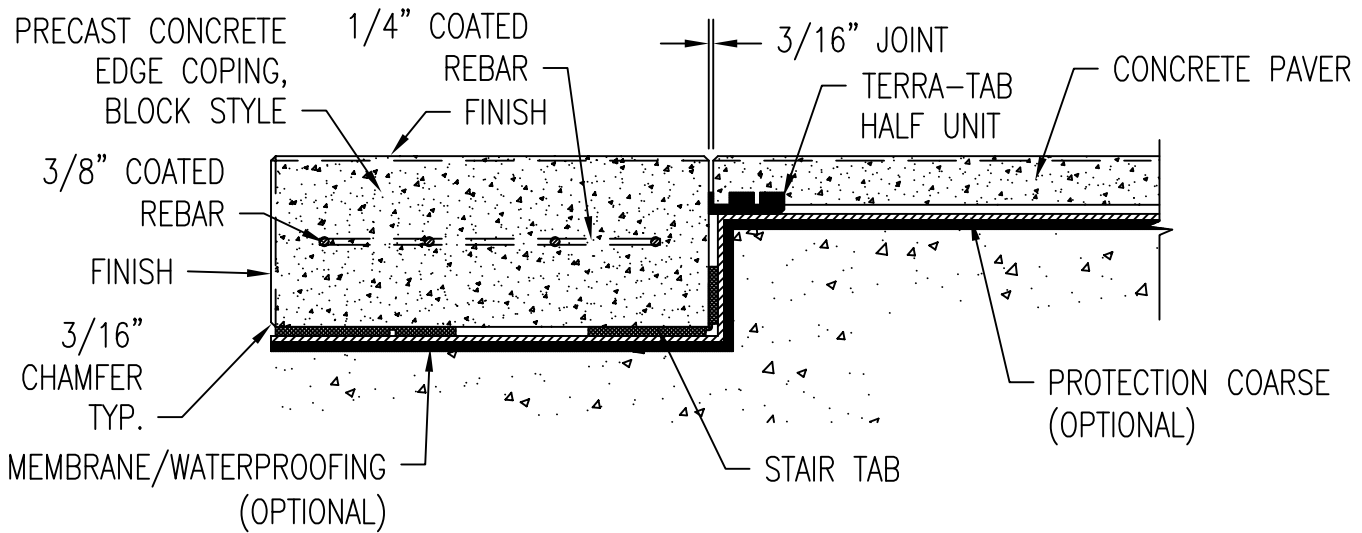
**CROSS SECTION OF WALL CAP**

Scale: 1/4" = 1"

**WAUSAU TILE SITE FURNISHINGS**

P.O. BOX 1520 WAUSAU, WISCONSIN 54402-1520 800/388-8728  
 P.O. BOX 967 BANNING, CALIFORNIA 92220 877/849-5695

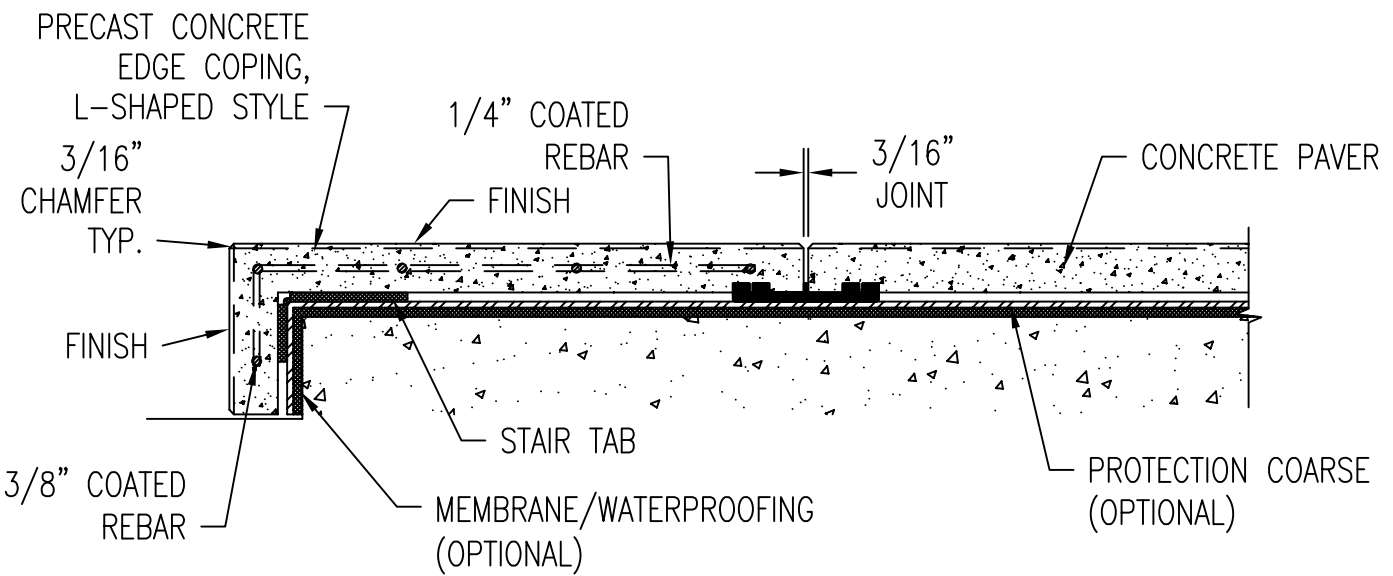
REVISIONS			DRAWN BY PAW	JOB WALL CAP	MATERIAL PRECAST CONCRETE
NO.	DATE	BY	TITLE WALL CAP	JOB NO.	WEIGHT
1			SCALE AS NOTED	UNLESS OTHERWISE SPECIFIED DIMENSIONS ARE IN INCHES TOLERANCES: ±1/8"	DATE 12/17/10
2					FINISH OPTIONS
3					DWG. NO. PC-12



1

**CROSS SECTION OF EDGE COPING, BLOCK STYLE**

Scale: 1/8" = 1"



2

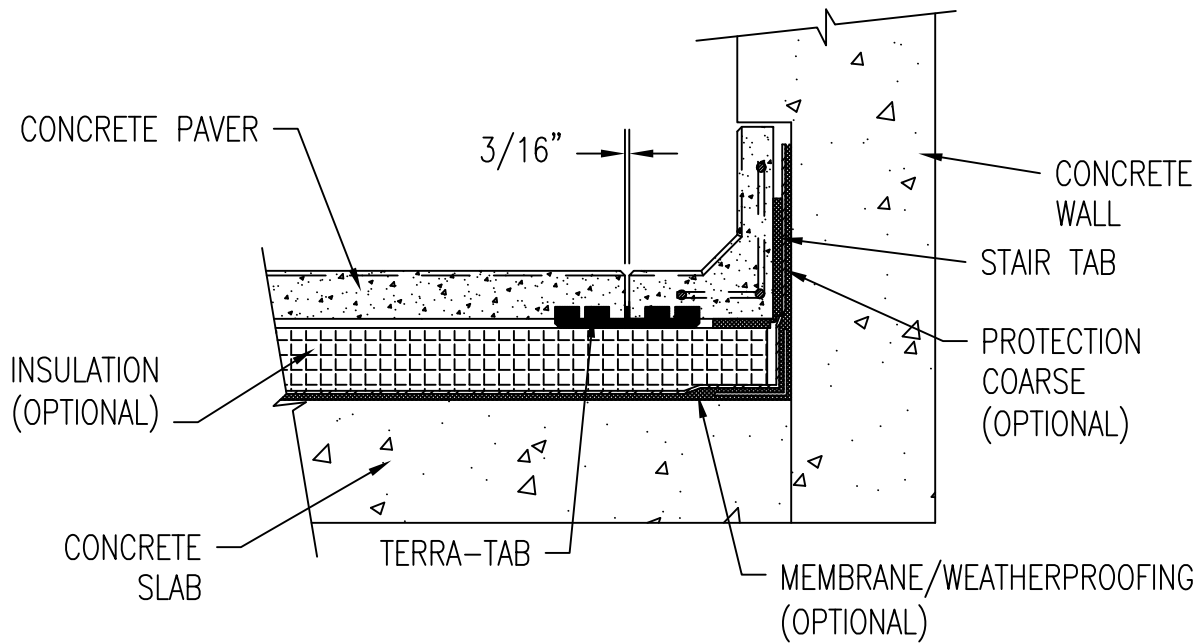
**CROSS SECTION OF EDGE COPING, L-SHAPED STYLE**

Scale: 1/8" = 1"

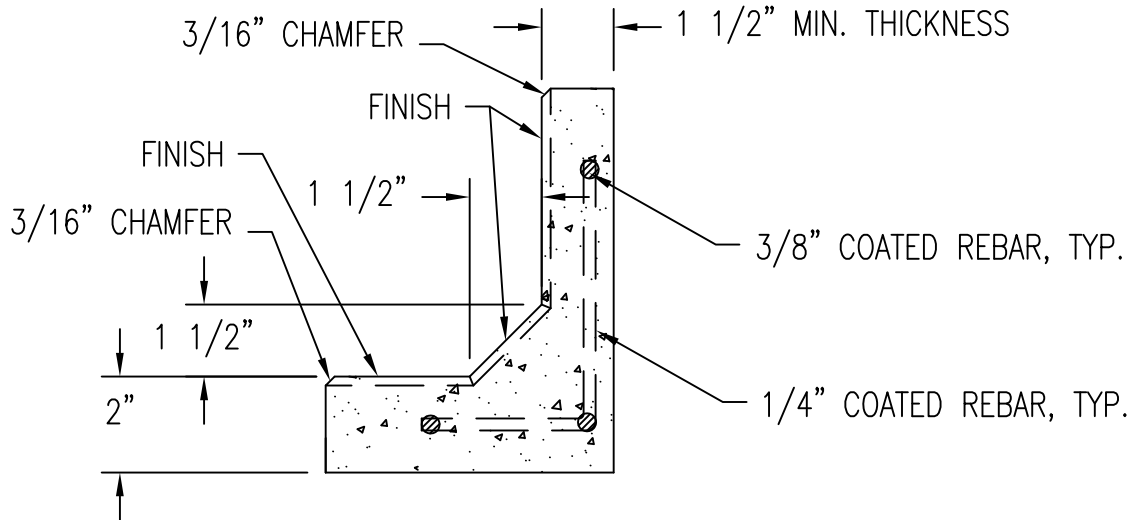
**WAUSAU TILE SITE FURNISHINGS**

P.O. BOX 1520 WAUSAU, WISCONSIN 54402-1520 800/388-8728  
P.O. BOX 967 BANNING, CALIFORNIA 92220 877/849-5695

REVISIONS			DRAWN BY PAW	JOB EDGE COPING, BLOCK OR L-SHAPED STYLES	MATERIAL PRECAST CONCRETE
NO.	DATE	BY	TITLE EDGE COPING	JOB NO.	WEIGHT
1			SCALE AS NOTED	UNLESS OTHERWISE SPECIFIED DIMENSIONS ARE IN INCHES TOLERANCES: ±1/8"	DATE 12/17/10
2					FINISH OPTIONS
3					DWG. NO. PC-13



**1** CROSS SECTION OF CHAMFERED COVERED BASE Scale: 1/8" = 1"

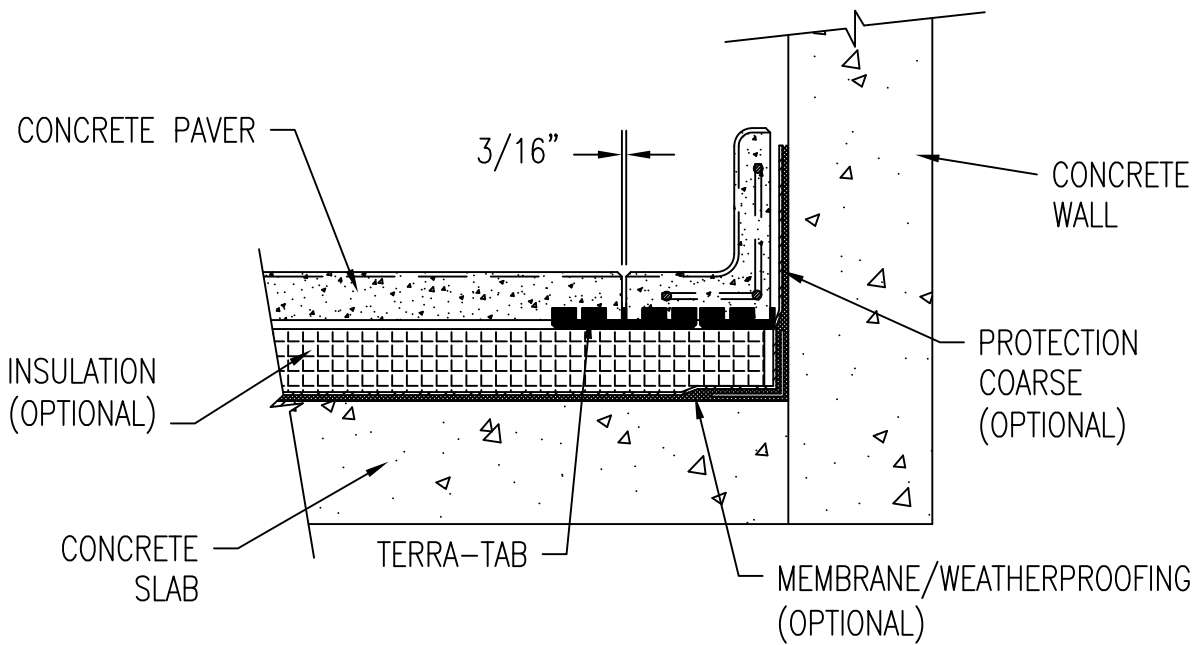


**2** ENLARGED CROSS SECTION OF CHAMFERED COVERED BASE Scale: 1/4" = 1"

**WAUSAU TILE SITE FURNISHINGS**

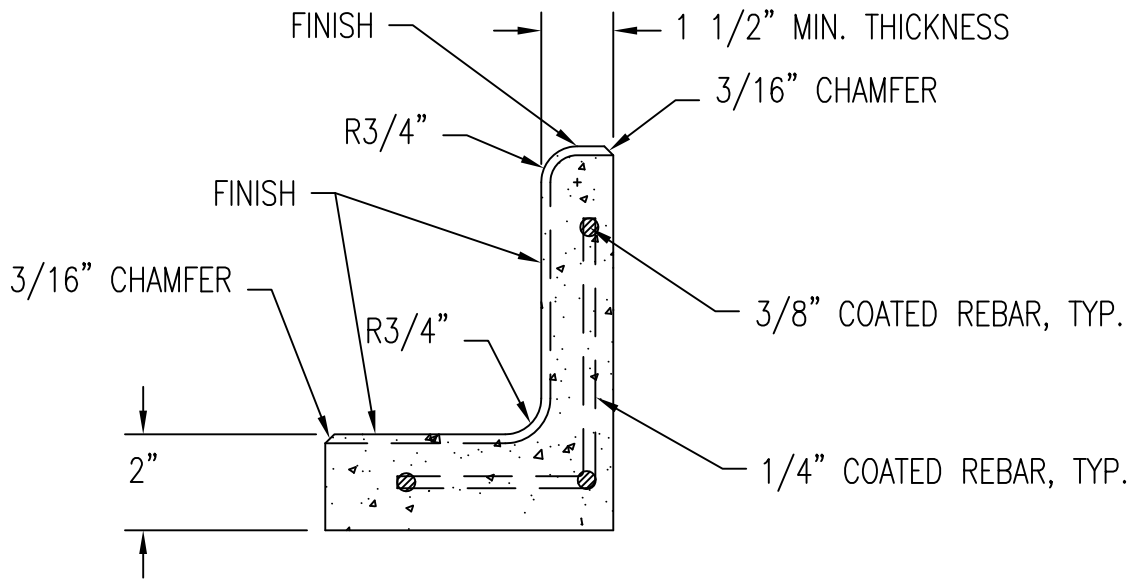
P.O. BOX 1520 WAUSAU, WISCONSIN 54402-1520 800/388-8728  
 P.O. BOX 967 BANNING, CALIFORNIA 92220 877/849-5695

REVISIONS			DRAWN BY PAW	JOB CHAMFER COVE BASE	MATERIAL PRECAST CONCRETE
NO.	DATE	BY	TITLE CHAMFER COVE BASE	JOB NO.	WEIGHT
1			SCALE AS NOTED	UNLESS OTHERWISE SPECIFIED DIMENSIONS ARE IN INCHES TOLERANCES: ±1/8"	DATE 12/17/10
2					FINISH OPTIONS
3					DWG. NO. PC-14A



**1** CROSS SECTION OF RADIUS COVERED BASE

Scale: 1/8" = 1"



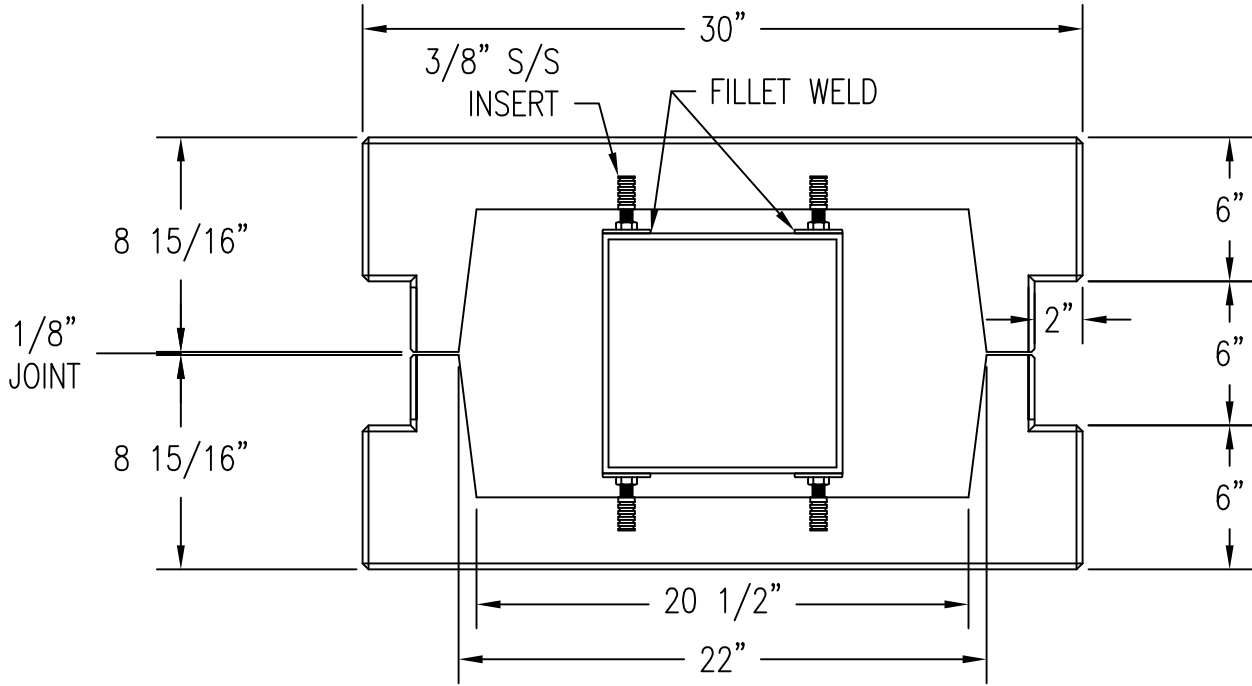
**2** ENLARGED CROSS SECTION OF RADIUS COVERED BASE

Scale: 1/4" = 1"

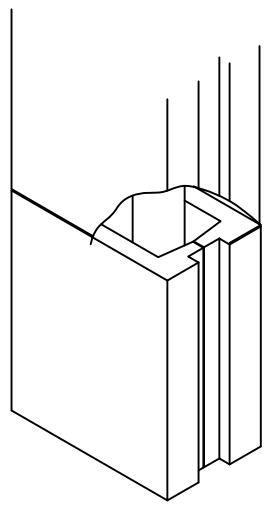
**WAUSAU TILE SITE FURNISHINGS**

P.O. BOX 1520 WAUSAU, WISCONSIN 54402-1520 800/388-8728  
 P.O. BOX 967 BANNING, CALIFORNIA 92220 877/849-5695

REVISIONS			DRAWN BY PAW	JOB RADIUS COVE BASE	MATERIAL PRECAST CONCRETE
NO.	DATE	BY	TITLE RADIUS COVE BASE	JOB NO.	WEIGHT
1			SCALE AS NOTED	UNLESS OTHERWISE SPECIFIED DIMENSIONS ARE IN INCHES TOLERANCES: ±1/8"	DATE 12/17/10
2					FINISH OPTIONS
3					DWG. NO. PC-14B



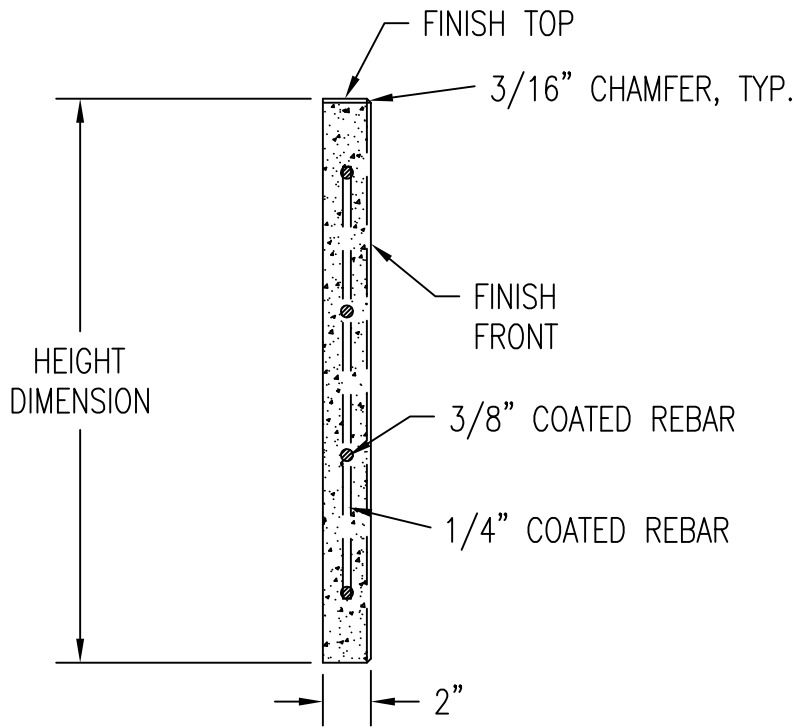
**1** TOP VIEW - COLUMN COVER  
Scale: 1/8" = 1"



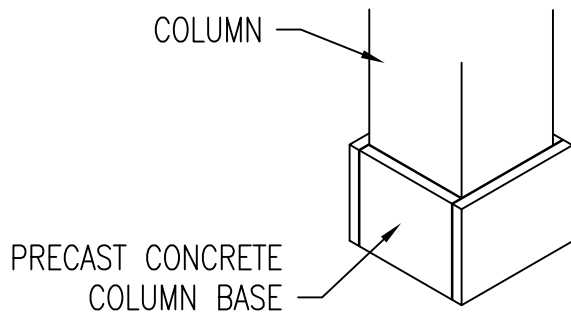
**2** ISOMETRIC - COLUMN COVER  
Scale: N.T.S.

**WAUSAU TILE SITE FURNISHINGS** P.O. BOX 1520 WAUSAU, WISCONSIN 54402-1520 800/388-8728  
P.O. BOX 967 BANNING, CALIFORNIA 92220 877/849-5695

REVISIONS			DRAWN BY PAW	JOB COLUMN COVER	MATERIAL PRECAST CONCRETE
NO.	DATE	BY	TITLE COLUMN COVER	JOB NO.	WEIGHT
1			SCALE AS NOTED	UNLESS OTHERWISE SPECIFIED DIMENSIONS ARE IN INCHES TOLERANCES: ±1/8"	DATE 12/17/10
2					FINISH OPTIONS
3					DWG. NO. PC-15



**1** CROSS SECTION - COLUMN BASE  
 Scale: 1/8" = 1"



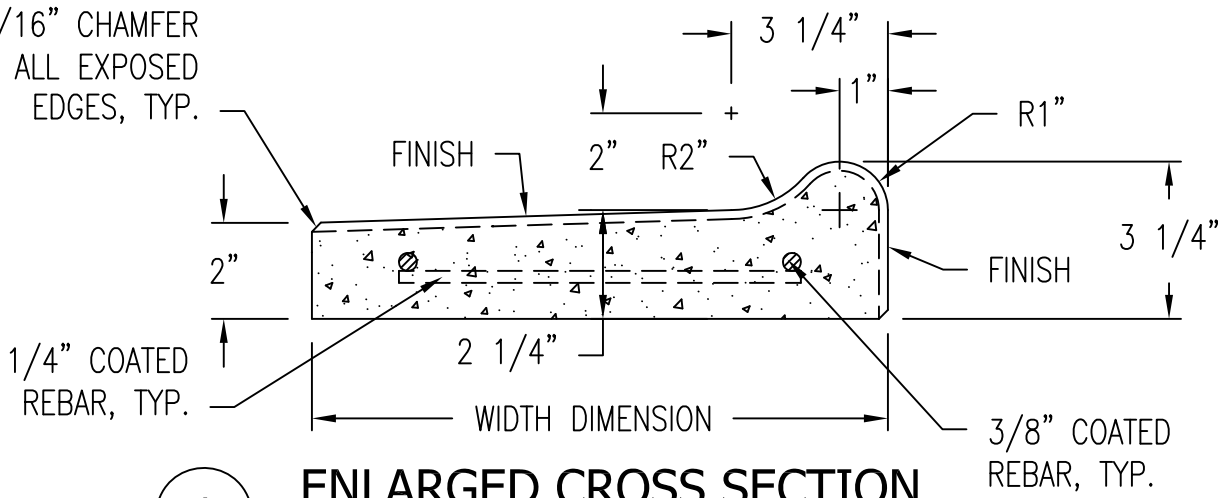
**2** ISOMETRIC - COLUMN BASE  
 Scale: N.T.S.

**WAUSAU TILE SITE FURNISHINGS**

P.O. BOX 1520 WAUSAU, WISCONSIN 54402-1520 800/388-8728  
 P.O. BOX 967 BANNING, CALIFORNIA 92220 877/849-5695

REVISIONS			DRAWN BY PAW	JOB COLUMN BASE	MATERIAL PRECAST CONCRETE
NO.	DATE	BY	TITLE COLUMN BASE	JOB NO.	WEIGHT
1			SCALE AS NOTED	UNLESS OTHERWISE SPECIFIED DIMENSIONS ARE IN INCHES TOLERANCES: ±1/8"	DATE 12/17/10
2					FINISH OPTIONS
3					DWG. NO. PC-16

3/16" CHAMFER  
ON ALL EXPOSED  
EDGES, TYP.



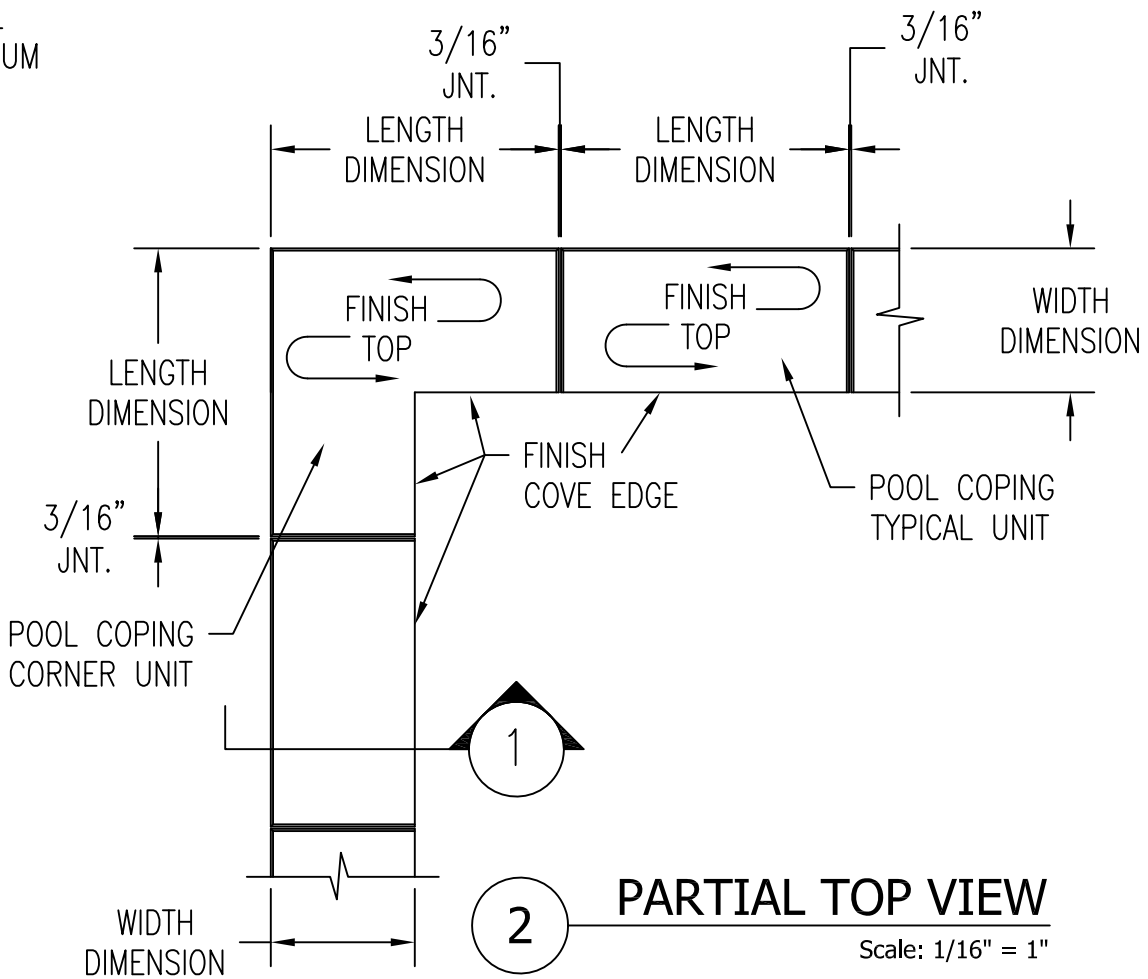
1

**ENLARGED CROSS SECTION**

Scale: 1/4" = 1"

PARAMETERS:

6'-0" MAXIMUM  
LENGTH



2

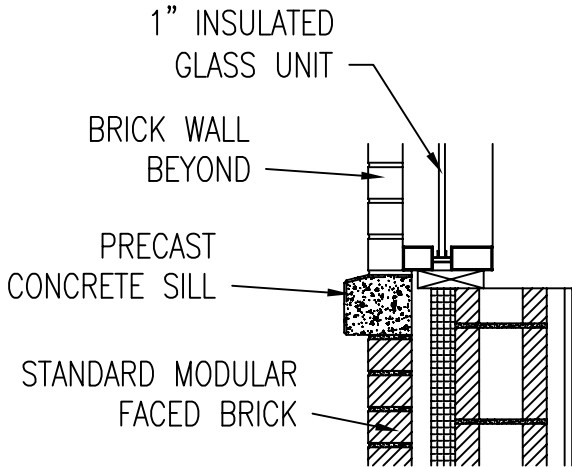
**PARTIAL TOP VIEW**

Scale: 1/16" = 1"

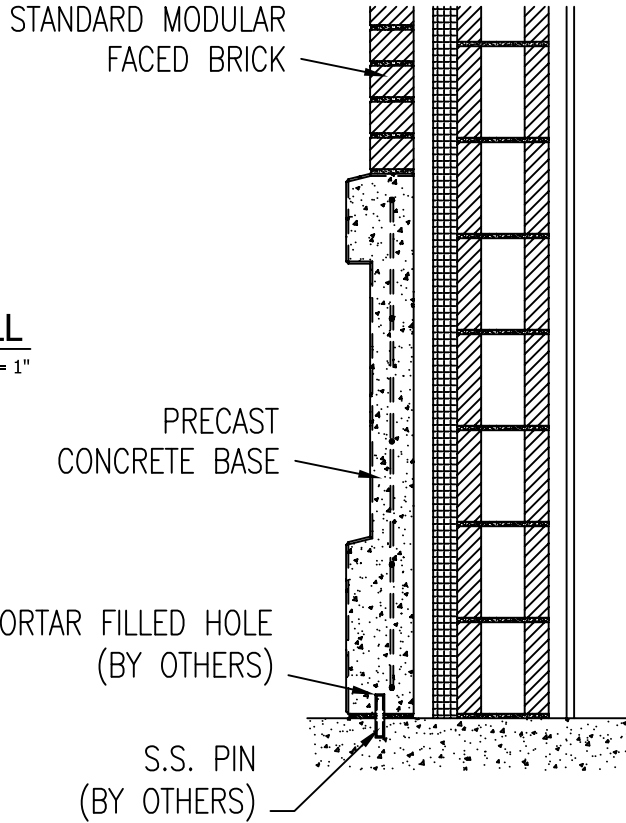
**WAUSAU TILE SITE FURNISHINGS**

P.O. BOX 1520 WAUSAU, WISCONSIN 54402-1520 800/388-8728  
P.O. BOX 967 BANNING, CALIFORNIA 92220 877/849-5695

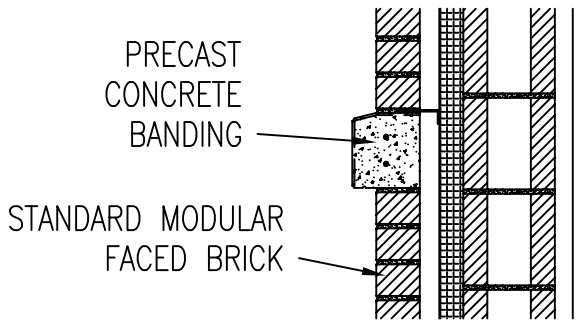
REVISIONS			DRAWN BY PAW	JOB POOL COPING		MATERIAL PRECAST CONCRETE	
NO.	DATE	BY	TITLE POOL COPING	JOB NO.		WEIGHT	
1			SCALE AS NOTED	UNLESS OTHERWISE SPECIFIED DIMENSIONS ARE IN INCHES TOLERANCES: ±1/8"		DATE 12/17/10	
2						FINISH OPTIONS	
3						DWG. NO. PC-17	



**1** INSTALLATION DETAIL - SILL  
Scale: 1/16" = 1"



**3** INSTALLATION DETAIL - BASE  
Scale: 1/16" = 1"

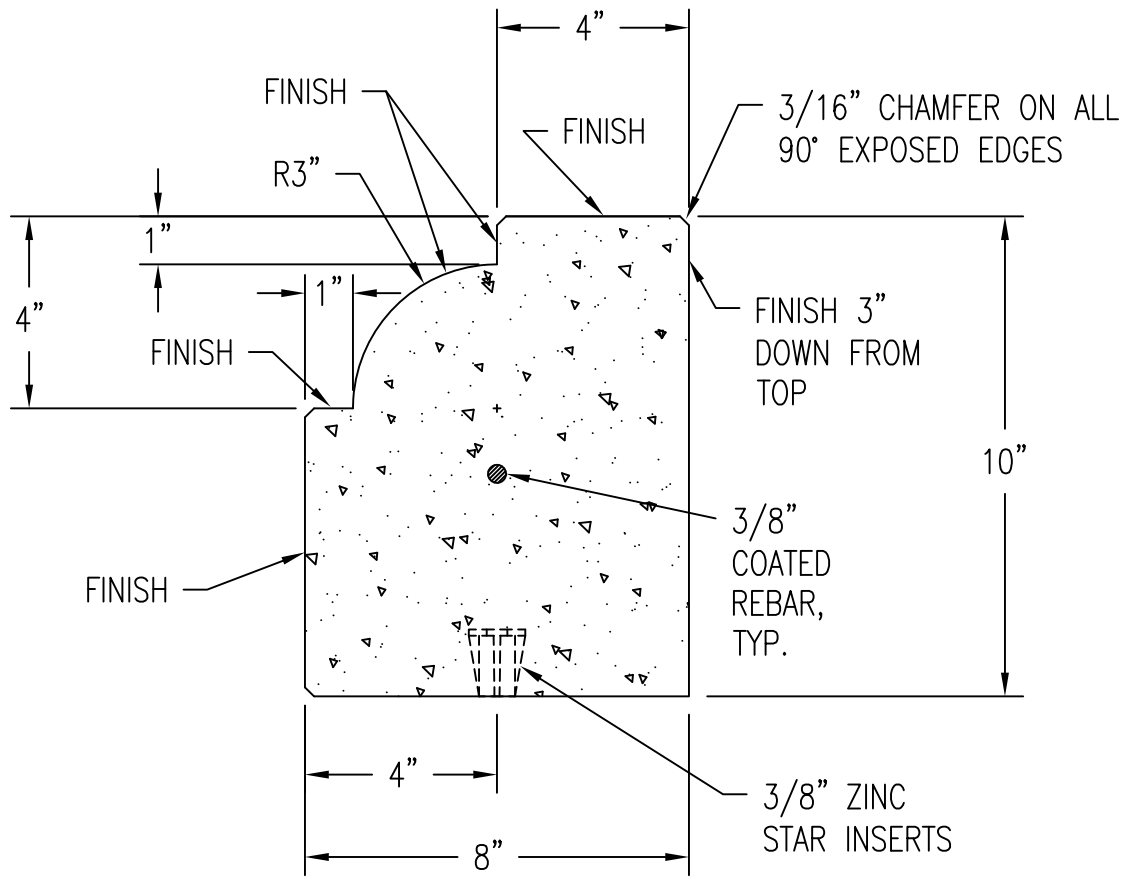


**2** INSTALLATION DETAIL - BANDING  
Scale: 1/16" = 1"

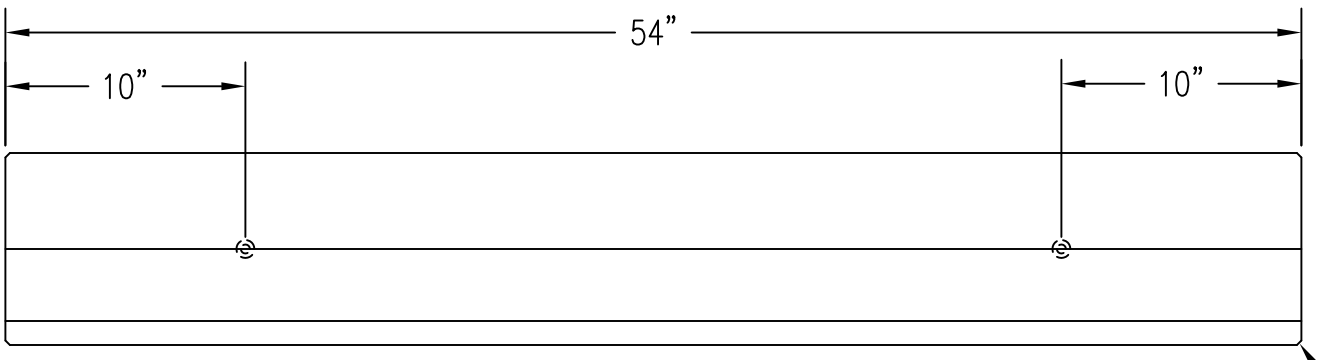
# WAUSAU TILE SITE FURNISHINGS

P.O. BOX 1520 WAUSAU, WISCONSIN 54402-1520 800/388-8728  
P.O. BOX 967 BANNING, CALIFORNIA 92220 877/849-5695

REVISIONS			DRAWN BY PAW	JOB SILLS, BASE & BANDING		MATERIAL PRECAST CONCRETE	
NO.	DATE	BY	TITLE SILLS, BASE & BANDING	JOB NO.		WEIGHT	
1			SCALE AS NOTED	UNLESS OTHERWISE SPECIFIED DIMENSIONS ARE IN INCHES TOLERANCES: ±1/8"	DATE 12/17/10	FINISH OPTIONS	
2						DWG. NO. PC-18	
3							



**1 CURBING - CROSS SECTION**  
Scale: 1/4" = 1"



**2 CURBING - PLAN VIEW**  
Scale: 1/8" = 1"  
3/16" CHAMFER, TYP.

**WAUSAU TILE SITE FURNISHINGS** P.O. BOX 1520 WAUSAU, WISCONSIN 54402-1520 800/388-8728  
P.O. BOX 967 BANNING, CALIFORNIA 92220 877/849-5695

REVISIONS			DRAWN BY PAW	JOB CURBING	MATERIAL PRECAST CONCRETE
NO.	DATE	BY	TITLE CURBING	JOB NO.	WEIGHT
1			SCALE AS NOTED	UNLESS OTHERWISE SPECIFIED DIMENSIONS ARE IN INCHES TOLERANCES: ±1/8"	FINISH OPTIONS
2				DATE 12/17/10	DWG. NO. PC-19
3					

# SECTION 3400

## Precast Concrete Amenities

### Part 1 - General

#### 1.1 SUMMARY

- A. Types of precast concrete work include:
  - 1. Precast Concrete Stairs
  - 2. Precast Concrete Caps
  - 3. Precast Concrete Copings
  - 4. Precast Concrete Wall Panels
  - 5. Precast Concrete Base
  - 6. Precast Concrete \_\_\_\_\_
- B. Setting material, grouts, sealants and caulks.
- C. Installation of precast concrete stairs, caps, copings, etc.
- D. Related work not specified under this section.
  - 1. Installation of steel units to receive precast concrete.
  - 2. Installation of concrete substrate to receive precast concrete.

#### 1.2 REFERENCES

- A. American Society for Testing and Materials (ASTM)
  - 1. ASTM C-150
  - 2. ASTM C-33
  - 3. ASTM C-260
  - 4. ASTM C-494
  - 5. ASTM C-128
  - 6. ASTM C-31
- B. Precast/Prestressed Concrete Institute (PCI)
- C. American Concrete Institute (ACI)
  - 1. ACI-318

#### 1.3 SUBMITTALS

- A. Shop Drawings
  - 1. Submit shop drawings of all precast concrete items showing detail sections and profile for all precast items. Details shall show all reinforcing and special hardware required for fastening.
- B. Samples
  - 1. Submit 1 sample, 6" x 12" size for each color.
    - a. Color to be selected from Wausau Tile Site Furnishings color chart.
    - b. Sample to be submitted for color and texture.
    - c. Match existing or architect's sample.
  - 2. Submit copy of Quality Assurance and Procedure Program.

C. Performance Requirements

1. Compressive Strength 5000 p.s.i.
2. Air Content 6-8%
3. Water-Cement Ratio .45:1

D. Certification

1. Suppliers shall furnish certification attesting that materials meet specification requirements.

1.4 QUALITY ASSURANCE

- A. PCI Standards: Comply with specified provisions and recommendations of the Precast/Prestressed Concrete Institute. (PCI)
- B. ACI Manual of Concrete Practice: Comply with specified provisions and recommendations of the American Concrete Institute. (ACI)
- C. Manufacturer's Instructions: In addition to specified requirements, comply with precast concrete manufacturer's instructions and recommendations for substrate preparation, material storage, mixing and application, finishing and curing.
- D. Qualifications: Precast Concrete Manufacturer and Trade Contractor must have a minimum of 5 years of successful experience on projects of similar magnitude and complexity to that indicated project. Manufacturer and contractor to be prequalified by architect prior to bidding. Failure to prequalify will void bid.
- E. Manufacturer to supply a written Quality Assurance Program and Procedure Manual.

1.5 DELIVERY, STORAGE AND HANDLING

- A. Packaging and Shipping: Precast concrete to be palletized and shrink wrapped, delivered in original unopened packaging with legible manufacturer identification, including size, piece number, quantities, manufacture date and inspectors initials.
- B. Storage and Protection: Precast concrete to be stored in secure area in original packaging. Protect from damage by other trades.

1.6 WARRANTY

- A. Manufacturer/Installer shall warrant installed system for a period of 2 years from date of substantial completion against failure of workmanship and materials.

## Part 2 - Products

### 2.1 MANUFACTURERS

- A. Acceptable manufacturer.
  - 1. Wausau Tile, Inc.
- B. Clarification Note: Drawings and specifications are based on manufacturer's proprietary literature from Wausau Tile, Inc. Other manufacturers shall comply with minimum levels of material specifications and detailing indicated on the drawings specified herein.

### 2.2 MATERIALS

- A. Portland Cement: ASTM C-150 specifications for Portland Cement.
- B. Aggregates: All aggregates to meet ASTM C-33 specifications, cleaned and properly graded to size. Aggregates shall be blended to meet individual project requirements.
- C. Coloring: Pigments used shall be inorganic, resistant to alkalinity and used per manufacturer's recommendations.
- D. Reinforcement and Hardware
  - 1. To conform with ACI and manufacturer's design.
  - 2. Reinforce precast with deformed rods or wire, or both, as recommended by precast concrete manufacturer.
- E. Caulks and Sealants
  - 1. Urethane or Polyurethane sealant
  - 2. Color to be selected by architect from standard color pallet.
- F. Sealer: Colorless, pure acrylic water-repellent penetrating sealer. Sealer to maintain natural look of concrete surface with no glaze or gloss, darkening or color change.

### 2.3 MANUFACTURED UNITS

- A. Sizing Tolerances
  - 1. All units to conform to shop drawings, with a 1/8" tolerance in dimension.
- B. Precast Surfaces and Edges
  - 1. All exposed edges to have minimum 1/8" chamfer to prevent chipping.
  - 2. Finished surfaces to match approved control sample.
  - 3. All precast concrete finished surfaces to be sealed with a sealer approved by manufacturer.

## Part 3 - Execution

### 3.1 INSPECTION

- A. Examine areas to receive precast concrete for the following:
  - 1. Defects in existing work or substrate.
  - 2. Deviation beyond allowable tolerances for the substrate.
- B. Start work only when defects have been corrected by others.

### 3.2 INSTALLATION

- A. Setting
  - 1. Set accurately as shown on approved shop drawing. Setting methods are:
    - a. Mud Set
    - b. Thin Set
    - c. Weld
    - d. Bolt
    - e. Setting Clips/Hangers
    - f. Tab Set
  - 2. Alignment of precast should be straight and true to all dimensions. It may not vary more than 1/8" in length, height or width.
  - 3. Install anchors as shown on details.
  - 4. Fill joints between with manufacturer approved caulk or as specified.
- B. Protection
  - 1. Upon completion, the work shall be ready for final inspection and acceptance by the owner or owner agent.
  - 2. General contractor shall protect the finished work from the time the installing contractor completes the work.
- C. Finish
  - 1. Overall uniformity in matrix and aggregate.
  - 2. All product to be sealed with approved sealer.

## 1. SUBSTRATE INSPECTION

- A. Surface inspection for cracking and defects.
- B. Dimension verification of architectural, shop drawings and substrate.
- C. Any corrections to substrate are to be completed before installation.

## 2. PRECAST TREAD LAYOUT

- A. Finish heights at all floors and landings to be established.
- B. Divide number of risers into the floor to landing height and determine the exact riser height.
- C. Establish exact tread width.
- D. Layout and mark all finished nosing locations on walls or stringers of stairway.
- E. Check precast tread dimensions before setting.

## 3. INSTALLATION OF PRECAST TREADS - THINSET APPLICATION

- A. Substrate of concrete or steel (steel at interior application only) must be within a tolerance of 1/8" in all dimensions.
- B. Steel or concrete surface to receive precast is to be primed with a concrete bonding agent.
- C. Latex modified thinset mortar is used in a full bed method over concrete substrate. Epoxy thinset is used over steel substrate.
- D. Set treads level and plumb to meet finished nosing layout marks.

## 4. INSTALLATION OF PRECAST TREAD - MORTAR SET APPLICATION

- A. Steel or concrete surface to receive precast is to be primed with a concrete bonding agent.
- B. The height of the mortar bed is established based on tread nosing layout marks. The mortar bed is then placed or screeded over primed substrate.
- C. Treads to be placed level and plumb to established nosing layout marks.

## 5. INSTALLATION OF PRECAST CONCRETE TREAD - TAB SET APPLICATION

- A. Substrate of concrete or steel (steel at interior application only) must be within a tolerance of 1/8" in all dimensions.
- B. Tabs to be set at front and back of tread every 18" to 24" maximum.
- C. Set treads level and plumb to established nosing layout marks.
- D. Shimming may be required if substructure is not true.

## 6. CAULKING OF PRECAST TREADS

- A. Clean all joints thoroughly, removing all debris.
- B. Wipe all joints with caulk manufacturer's recommended cleaner prior to application.
- C. Use a urethane caulk. (Color match caulk to precast per architect selection.)
- D. Clean up after caulking as per caulk manufacturer's recommendations.

## 7. FINAL CLEANING AND SEALING OF PRECAST TREADS

- A. Clean treads with a pH balanced soap.
- B. Check all surfaces and caulking, make repairs as necessary.
- C. Apply a coat of concrete sealer as per manufacturer's recommendations. (Precast must be completely clean and dry before sealer is applied.)



Since 1953

# Wausau Tile, Inc. Site Furnishings & Precast Concrete Maintenance & Warranty Manual

## Table of Contents

Concrete (Site Furnishings & Precast) & Plastic  
Warranty.....2

Concrete (Site Furnishings & Precast) & Plastic  
Maintenance Procedures.....3, 4

Metal Site Furnishings  
Warranty.....5

Metal Site Furnishings  
Cleaning Instructions.....6

Wausau Tile, Inc.  
Site Furnishings Division  
P.O. Box 1520 • Wausau, WI 54402-1520  
1-800/388-8728 • 715/359-3121 • Fax: 715/355-4627  
www.wausautile.com



Since 1953

---

# Wausau Tile, Inc. Site Furnishings & Precast Concrete Limited Warranty

## **Concrete Products:**

For a period of two (2) years commencing from date of purchase, Wausau Tile, Inc. warrants its concrete products against defects in workmanship and materials per industry standards.

## **Plastic Products:**

For a period of one (1) year commencing from date of purchase, Wausau Tile, Inc. warrants its plastic products against defects in workmanship and materials per industry standards.

The above products must be maintained as directed on pages 3 and 4 of the maintenance manual, and all invoices must be paid in full or the warranty will be considered void.

This warranty does not cover the above products for cracking and faulting caused by settling due to an improper base; nor does it cover damage caused by impact, vandalism or natural disaster.

Wausau Tile, Inc. will warrant any defects in surface, color and/or texture caused by poor workmanship in manufacturing. Wausau Tile, Inc.'s obligations over the period of the warranty are limited to the owner's original purchase price of product only as manufactured by Wausau Tile, Inc. **THERE ARE NO WARRANTIES WHICH EXTEND BEYOND THE DESCRIPTION ON THE FACE HEREOF.**

This warranty is validated only when Wausau Tile, Inc. is furnished with a copy of the owner's original invoice or delivery receipt.



Since 1953

---

## **Site Furnishings & Precast Concrete** **Maintenance Procedures**

Wausau Tile's precast concrete items can be easily maintained to preserve the attractive appearance and extend the life of the precast. If you have any further questions regarding maintenance or any other subject, please contact us at 800-388-8728. When using these procedures, please follow the product manufacturer's instructions regarding the use of any equipment or cleaning materials described here.

### **Annual Maintenance of Concrete**

Power sweep, then pressure wash total precast surface. Spot clean any stained areas using procedures described below.

To clean marks from concrete products, a simple off-the-shelf cleaner will handle most cases. These types of cleaners are often classified as neutral, non-aggressive cleaners, and may require a considerable amount of effort to remove some of the tougher marks.

Examples of off-the-shelf cleaners: Citrus cleaner, Simple Green

In extreme cases, paint thinner or other more aggressive types of cleaners can be used.

Note: Always start with the most neutral cleaner and work your way toward the more aggressive cleaners. The two provided examples are not recommendations of one product over another.

Remember, this is a concrete product and is built to withstand aggressive cleaning. However, the more aggressive the cleaner, the more risk is involved for the person doing the cleaning. Strict adherence to all product warnings is suggested.

Check the precast for broken and chipped pieces. Some pieces may be patched. Notify Wausau Tile of damaged piece. Wausau Tile will then assemble and send a patch kit with repair instructions. Please contact Wausau Tile before repairing, and review patching procedures.

In all cases after cleaning and patching, it is recommended that the item be sealed or re-stained and sealed. This will help protect the product from the environment. Contact Wausau Tile for additional instruction or to obtain sealer and stain.

Periodically, the sealer/stain must be reapplied. The frequency between applications is based on time and use. As specified in our warranty, an annual application is recommended. In cases of extreme use, the best time for application is when the appearance of the product is showing wear or is appearing dull.



Since 1953

---

### **Weather Maintenance of Concrete**

Removal of snow and ice should be performed with a shovel. Please be sure to use rubber or nylon tip equipment; this will help prevent scratches on the concrete.

De-icing salts can damage concrete, causing them to scale or break up. These chemicals should be used sparingly and with caution on our concrete products. No salt-based products should be used. Calcium magnesium acetate and calcium chloride cause the least damage to concrete. De-icers should be used only when necessary to help loosen snow and ice, and make removal easier. Never over-apply de-icing products, and remove slush before it has the opportunity to refreeze. Mix the de-icers with sand to increase their effectiveness and reduce overall use. One pound of de-icing salt mixed with 50 pounds of sand makes an effective mixture. Always read and follow label directions when applying de-icing materials.

### **Annual Maintenance of Plastic & Aluminum Parts**

Clean as needed with a mild detergent and water. These products may be treated with over-the-counter plastic cleaners/conditioners such as “Armor-All” for added luster if desired. The frequency of applications is based on environment and personal preference. All Wausau Tile plastic parts are produced using the best UV-stabilized plastics available on the market, and the use of a spray-on protectant is a personal choice. All paste-type waxes are not recommended.

Do not use grit or bleach-based cleaners, as these types of products will damage the plastic.

For aluminum parts, again, soap and water is the most effective method. In instances of scratching, touch-up with matching enamel paint will guard against oxidation. In extreme cases, all aluminum parts can be re-powder coated.

When in doubt of a particular cleaner or procedure, contact Wausau Tile, Inc. at 800-388-8728 prior to proceeding.



Since 1953

---

## Wausau Tile, Inc. Metal Site Furnishings Limited Warranty

Metal Site Furnishings division (seller) warrants its products in the following manner:

**Framing:**

For a period of two (2) years, seller warrants the under-support to be free from defects in material and workmanship.

**Metal-Armor<sup>sm</sup>-Coated Components:**

For a period of five (5) years, seller warrants all Metal-Armor<sup>sm</sup> -coated components to be free from defects in material and workmanship.

This will apply to chipping, cracking, peeling and fading. All warranty periods shall begin when the customer has received their product. The warranty does not cover any damage in transit, product misuse, intentional acts, vandalism, acts of God or improper installation. No person, except seller's president, may alter this warranty.

This warranty is in lieu of all other warranties, express or implied including, but not limited to, warranties of merchantability or fitness for particular purpose. Upon proper presentation and verification of a valid claim within the applicable warranty period seller, at its option, shall repair or replace the defective part or parts F.O.B. Wausau, Wisconsin, excluding site labor costs. This remedy is the buyer's sole and exclusive remedy. In no event shall seller be liable for any indirect, special, incidental or consequential damages.

The product must be maintained as directed on page 6 of maintenance manual, and all invoices must be paid in full or the warranty will be considered void.

Wausau Tile, Inc. will warrant any defects in surface, color and/or texture caused by poor workmanship in manufacturing. Wausau Tile, Inc.'s obligation over the period of the warranty is limited to the owner's original purchase price of product only as manufactured by Wausau Tile, Inc. **THERE ARE NO WARRANTIES THAT EXTEND BEYOND THE DESCRIPTION ON THE FACE HEREOF.**



Since 1953

---

## Metal-Armor Cleaning Procedures

Metal-Armor<sup>sm</sup> utilizes several unique products and coating processes throughout the entire product line. Although all these parts are unique, the same cleaning principles apply for all metal products.

All metal panels are coated with our exclusive Metal-Armor<sup>sm</sup> thermo-plastic coating. The tubular framework is powder-coated. Tops are either polyethylene or powder-coated cast aluminum. Certain containers utilize an EPDM rubber-positioning ring. All of these products require minimal maintenance to keep them looking like new.

Metal products may be cleaned with any standard-grade cleaning solution and a soft cloth. When finished, thoroughly rinse product to remove all cleaning solution. Do not use abrasive cleaners or scrubbing pads to clean these parts, as they may damage the surface of the product and cause it to lose its luster. Harsh, acidic cleaners may also damage the product and are not recommended.

Metal products used in the food service industry may be cleaned with standard degreasers and sanitizers.

In the case of severe damage to the finish, please contact Wausau Tile, Inc. We can offer touch-up advice or replacement parts.

If there are any questions on cleaning procedures or products, please contact Wausau Tile, Inc. at 800-388-8728.

**Wausau Tile, Inc.**  
**Site Furnishings Division**  
**P.O. Box 1520 • Wausau, WI 54402-1520**  
**1-800/388-8728 • 715/359-3121 • Fax: 715/355-4627**  
**[www.wausautile.com](http://www.wausautile.com)**